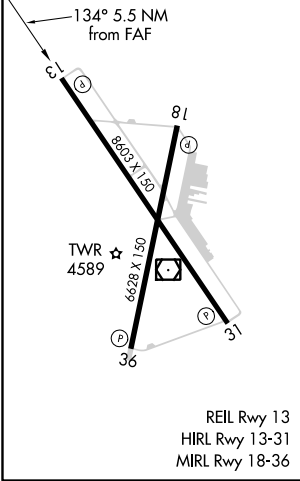
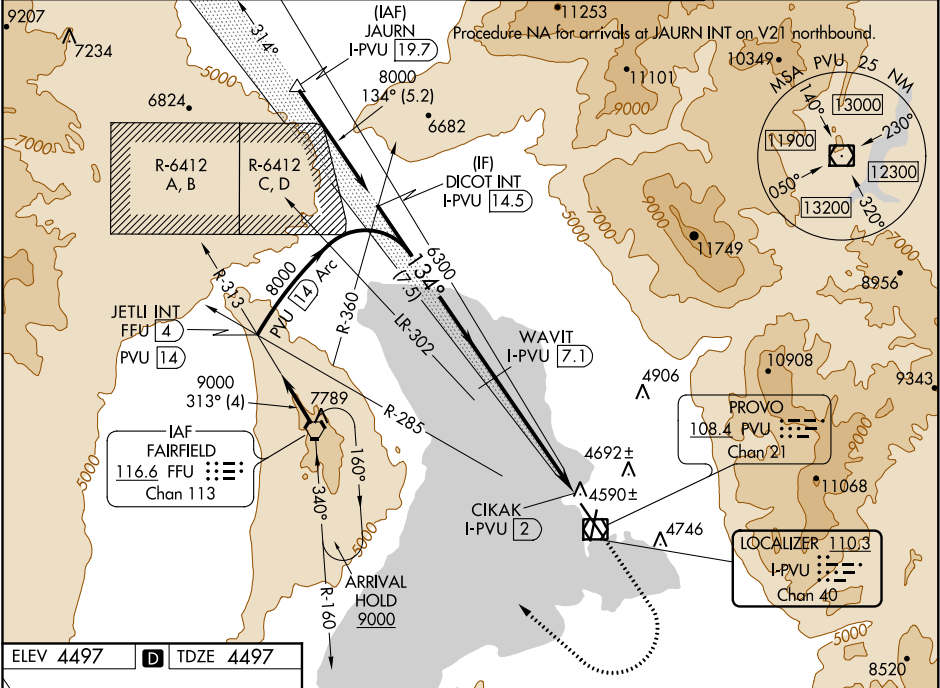


LOC/DME I-PVU	APP CRS	Rwy Idg	8599
110.3	134°	TDZE	4497
Chan 40		Apt Elev	4497

ILS or LOC RWY 13
PROVO MUNI (PVU)

<p>V Circling to Rwy 18 NA at night. A Circling NA east of Rwys 18 and 36. DME required.</p>	<p>MISSED APPROACH: Climb to 6200 then climbing right turn to 9000 direct FFU VORTAC and hold. # Missed approach requires minimum climb of 300 feet per NM to 8700.</p>
--	---

ATIS ★ 135.175	SALT LAKE CITY APP CON 118.85 233.7	PROVO TOWER ★ 125.3 (CTAF)	GND CON 119.4
--------------------------	---	--------------------------------------	-------------------------



VGSI and ILS glidepath not coincident.

6200

9000

FFU

↑

↷

⬡

Use I-PVU DME when on localizer course.

*LOC only.

DICOT INT

I-PVU 14.5

WAVIT

I-PVU 7.1

*I-PVU 2.5

CIKAK

I-PVU 2

8000

6300

6300

GS 3.00°

TCH 50

7.5 NM

4.6 NM

0.4 NM

0.5 NM

134°

CATEGORY	A	B	C	D
S-ILS 13#	4697-3/4		200 (200-3/4)	
S-ILS 13	5077-1 5/8		580 (600-1 5/8)	
S-LOC 13#	4820-1		323 (400-1)	
S-LOC 13	5220-1 723 (800-1)		5220-2 723 (800-2)	
CIRCLING	5220-1 723 (800-1)		5220-2 723 (800-2)	5260-2 1/2 763 (800-2 1/2)