

WAAS
CH **97307**
W13A

APP CRS
134°

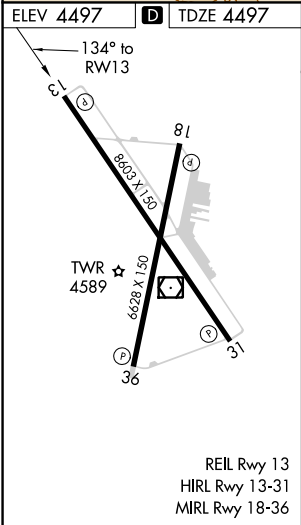
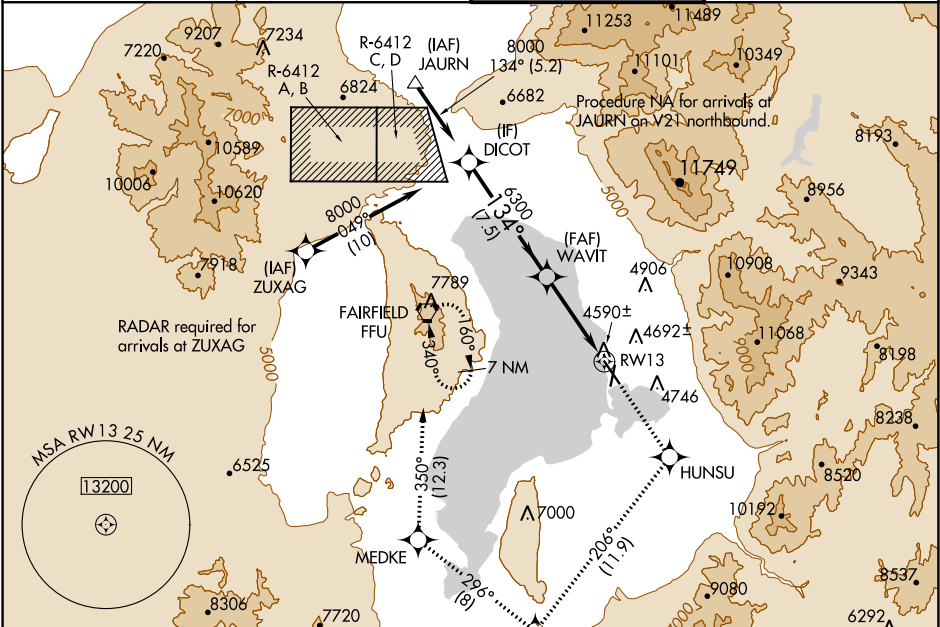
Rwy Idg
TDZE
Apt Elev
8599
4497
4497

RNAV (GPS) RWY 13
PROVO MUNI (PVU)

⚠ For uncompensated Baro-VNAV systems, LNAV/VNAV NA below -23°C (-9°F) or above 40°C (104°F).
DME/DME RNP-0.3 NA.
Circling NA east of Rwy 18 and 31.

MISSED APPROACH: Climb to 9000 direct HUNSU and on track 206° to SANN0 and right turn on track 296° to MEDKE and on track 350° to FFU VORTAC and hold.

ATIS ★ 135.175	SALT LAKE CITY APP CON 118.85 233.7	PROVO TOWER ★ 125.3 (CTAF)	GND CON 119.4
--------------------------	---	--------------------------------------	-------------------------



	DICOT	9000 HUNSU	SANN0	MEDKE	FFU
		↑	tr 206°	tr 296°	tr 350°
		WAVIT			
		8000	6300	6300	
		GP 3.00°			
		TCH 50			
		7.5 NM	3.9 NM	1.6 NM	
CATEGORY	A	B	C	D	
LPV DA	4697-3/4	200 (200-3/4)			
LNAV/VNAV DA	4940-1 1/2	443 (500-1 1/2)			
LNAV MDA	5040-1	543 (600-1)	5040-1 1/2	543 (600-1 1/2)	
CIRCLING	5040-1	543 (600-1)	5040-1 1/2	5060-2	563 (600-2)