

WAAS CH 90241 W35A	APP CRS 349°	Rwy Idg TDZE 5274 Apt Elev 5280
--	------------------------	---

RNAV (GPS) Z RWY 35

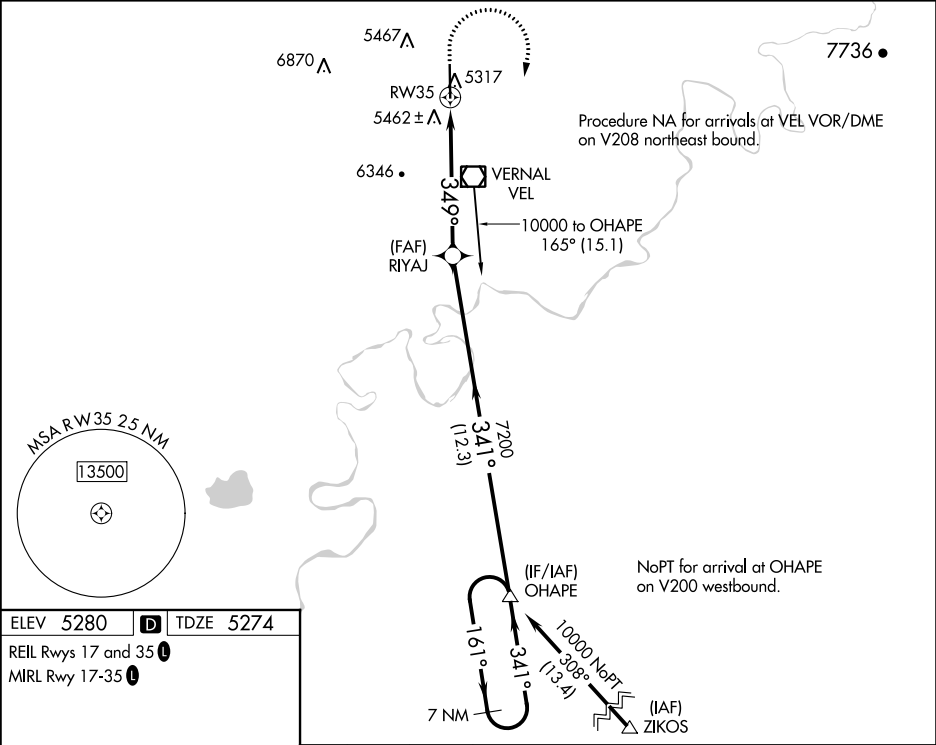
VERNAL RGNL (VEL)

Baro-VNAV NA when using Roosevelt altimeter setting. For uncompensated Baro-VNAV systems, LNAV/VNAV NA below -22°C (-7°F) or above 35°C (96°F). DME/DME RNP-0.3 NA. Rwy 35 helicopter visibility reduction below ¼ SM NA. When local altimeter setting not received, use Roosevelt altimeter setting and increase all DA 76 feet, increase *LPV all Cats visibility to 1½ SM, increase LNAV/VNAV all Cats visibility to 3 SM, and *LNAV/VNAV all Cats visibility to 1½ SM.

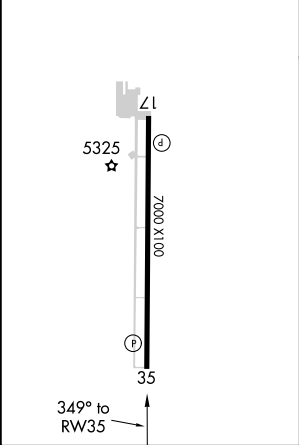
MISSED APPROACH: Climb to 7000 then climbing right turn to 10000 direct OHAPE and hold.

* Missed approach requires minimum climb of 290 feet per NM to 8600.

ASOS 135.175	SALT LAKE CENTER 119.95 377.15	UNICOM 122.7 (CTAF) 0
------------------------	--	---------------------------------



ELEV 5280	D	TDZE 5274
REIL Rws 17 and 35		
MIRL Rwy 17-35		



7000	10000	OHAPE	VGSI and RNAV glidepath not coincident (VGSI Angle 3.00/TCH 48).	OHAPE	7 NM Holding Pattern
↑	↗	△	RIYAJ	↖	
RW35		7200	341°	161°	10000
349°		7200	341°	341°	GP 3.10° TCH 60
5.7 NM		12.3 NM			
CATEGORY	A	B	C	D	
LPV DA*	5575-1 301 (300-1)				
LPV DA	6102-3 828 (900-3)				
LNAV/VNAV DA*	5786-1½ 512 (600-1½)				
LNAV/VNAV DA	6045-2½ 771 (800-2½)				

SW-4, 03 DEC 2020 to 31 DEC 2020

SW-4, 03 DEC 2020 to 31 DEC 2020