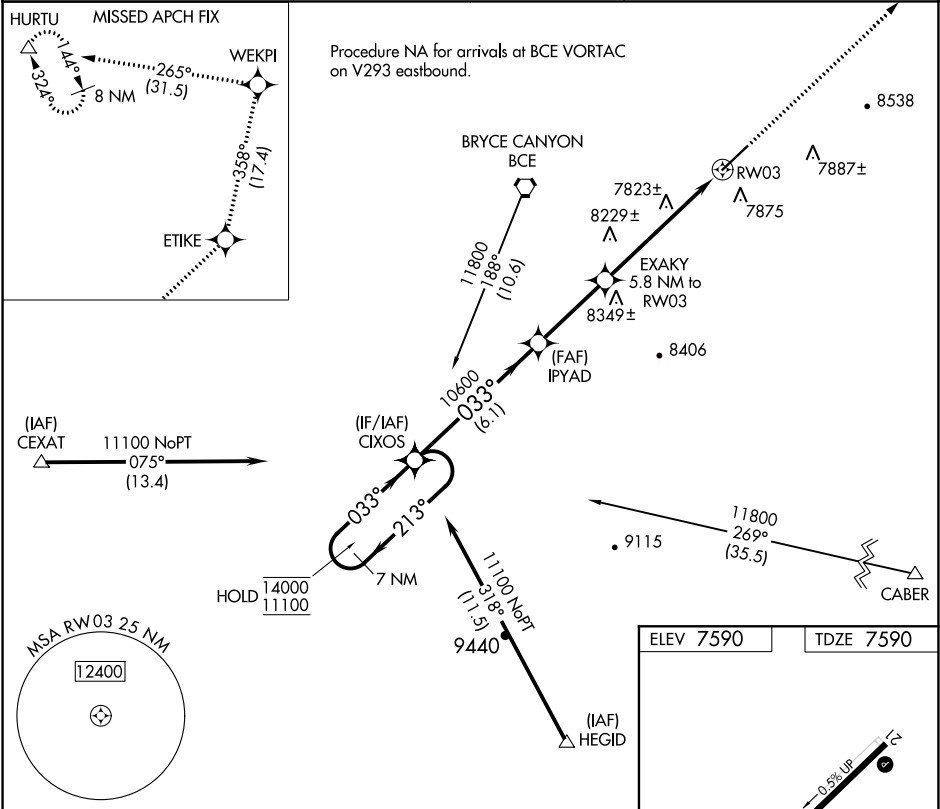


APP CRS	Rwy Idg	7394
033°	TDZE	7590
	Apt Elev	7590

RNAV (GPS) RWY 3
BRYCE CANYON (BCE)

RNP APCH.	MISSED APPROACH: Climb to 13000 direct ETIKE and on track 358° to WEKPI and left turn on track 265° to HURTU and hold.
-30°C	Rwy 3 helicopter visibility reduction below 1 SM NA. When local altimeter setting not received, procedure NA. Procedure NA at night.

ASOS 135.475	SALT LAKE CITY CENTER 133.6 269.25	UNICOM 122.8 (CTAF) 1
-----------------	---------------------------------------	--------------------------



7 NM Holding Pattern				13000	ETIKE	tr 358°	WEKPI	HURTU
14000 ← 213°				IPYAD				
11100 → 033°				EXAKY 5.8 NM to RWY 3				
033°				TCH 44				
10600				9500				
6.1 NM				3.3 NM				
5.8 NM				RWY 3				
CATEGORY	A	B	C	D				
LNAV MDA	8440-1 850 (900-1)	8440-1¼ 850 (900-1¼)	8440-2½ 850 (900-2½)	NA				