

RNAV (GPS) RWY 32

APCH CRS	Rwy ldg
321°	12,001
	TDZE
	5550
	Arpt Elev
	5550

AL-3188 [USAF]

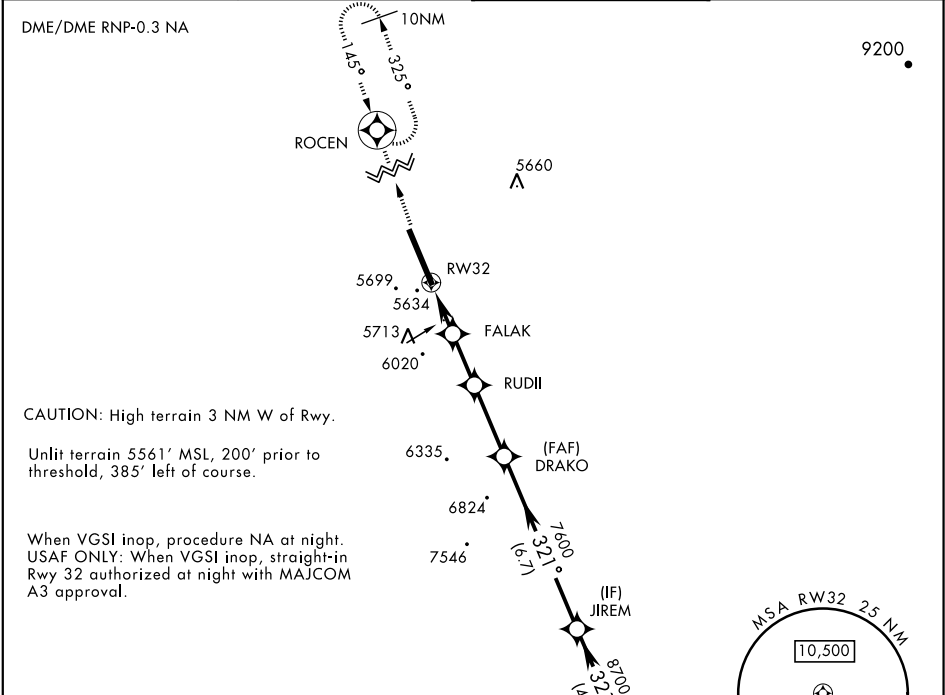
TONOPAH TEST RANGE (KTNX)

⚠ * When ALS inop, increase CAT CD vis to 1¼ miles.
** Circling NA West of Rwy 14/32.

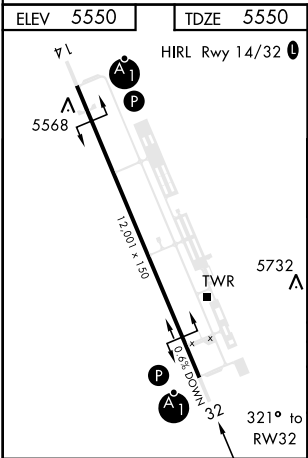
ALSF-1

MISSED APPROACH: Climb to 11,000 direct ROCEN and hold, continue climb-in-hold to 11,000.

AWOS 113.0	NELLIS CONTROL 119.35 254.4	SILVERBOW TOWER 124.75 257.95	GND CON 127.25 335.5
---------------	--------------------------------	----------------------------------	-------------------------



EMERG SAFE ALT 100 NM 16,600



11,000	ROCEN	↑ FALAK to RW32	DRAKO	JIREM
		1.3 NM to RW32		
		↑ FALAK		
		6160	6700	
		1.9 NM	2.1 NM	2.8 NM
CATEGORY	A	B	C	D
RNAV MDA *	5980/24 430 (500-½)	5980/40 430 (500-¾)		
CIRCLING **	6040-1 490 (500-1)	6040-1½ 490 (500-½)	6100-2 550 (600-2)	

RNAV (GPS) RWY 32

SW-4, 03 DEC 2020 to 31 DEC 2020

SW-4, 03 DEC 2020 to 31 DEC 2020