

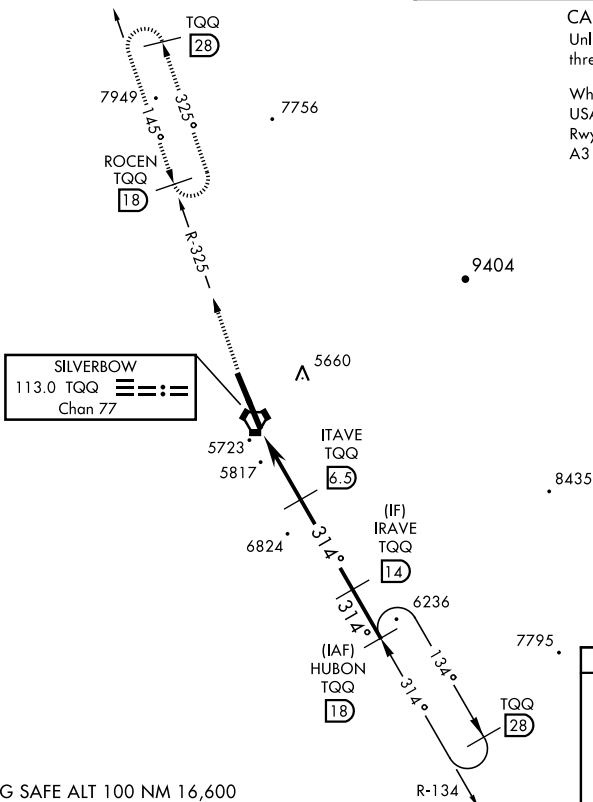
## VOR/DME or TACAN RWY 32

VORTAC TQO <b>113.0</b> Chan <b>77</b>	APCH CRS <b>314°</b>	Rwy ldg <b>12,001</b> THRE <b>5550</b> Arpt Elev <b>5550</b>
--	-------------------------	--

AL-3188 [USAF]

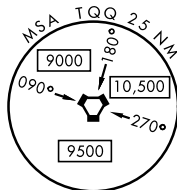
TONOPAH TEST RANGE (KTNX)

<b>▼</b> * When ALS inop, increase CAT CDE vis to 1½ miles. ** Circling NA W of Rwy 14/32		<b>ALSF-1</b> 	<b>MISSED APPROACH:</b> Climb to 11,000 via TQQ VORTAC R-325 to ROCEN and hold, continue climb in hold to 11,000.	
<b>AWOS</b> <b>113.0</b>	<b>NELLIS CONTROL</b> <b>119.35 254.4</b>	<b>SILVERBOW TOWER</b> ★ <b>124.75 257.95 0</b>		<b>GND CON</b> <b>127.25 335.5</b>



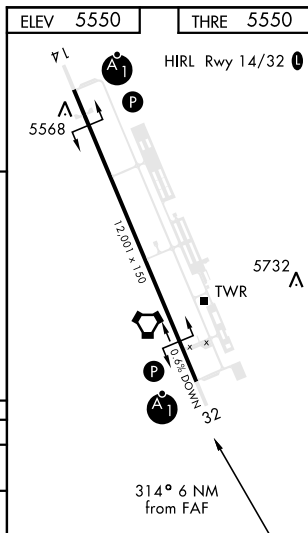
**CAUTION:** High terrain 3 NM W of Rwy. Unlit terrain 5561' MSL, 200' prior to threshold, 385' left of course.

When VGSi inop, procedure NA at night.  
 USAF ONLY: When VGSi inop, straight-in Rwy 32 authorized at night with MAJCOM A3 approval.



EMERG SAFE ALT 100 NM 16,600

11,000	ROCEN TQO R-325	18					ITAVE TQO 6.5	IRAVE TQO 14	HUBON TQO 18	
↑										
VORTAC			ITOGE 1		ITAVE 6.5		IRAVE 14		HUBON 18	
					7400		8700		10,400	
0.5 NM			5.5 NM							
CATEGORY			A		B		C		D	
S-32 *			6080-1		530		(600-1)			
CIRCLING**			6080-1		530 (600-1)		6080-1½ 530 (600-1½)		6100-2 550 (600-2)	



## VOR/DME or TACAN RWY 32