

VOR/DME Z RWY 14

VORTAC TQQ
113.0
Chan 77

APCH CRS
145°

Rwy Idg
THRE 5473
Arpt Elev 5550

AL-3188 [USAF]

TONOPAH TEST RANGE (KTNX)

V

*Circling not authorized W of Rwy 14/32.

ALSF-1

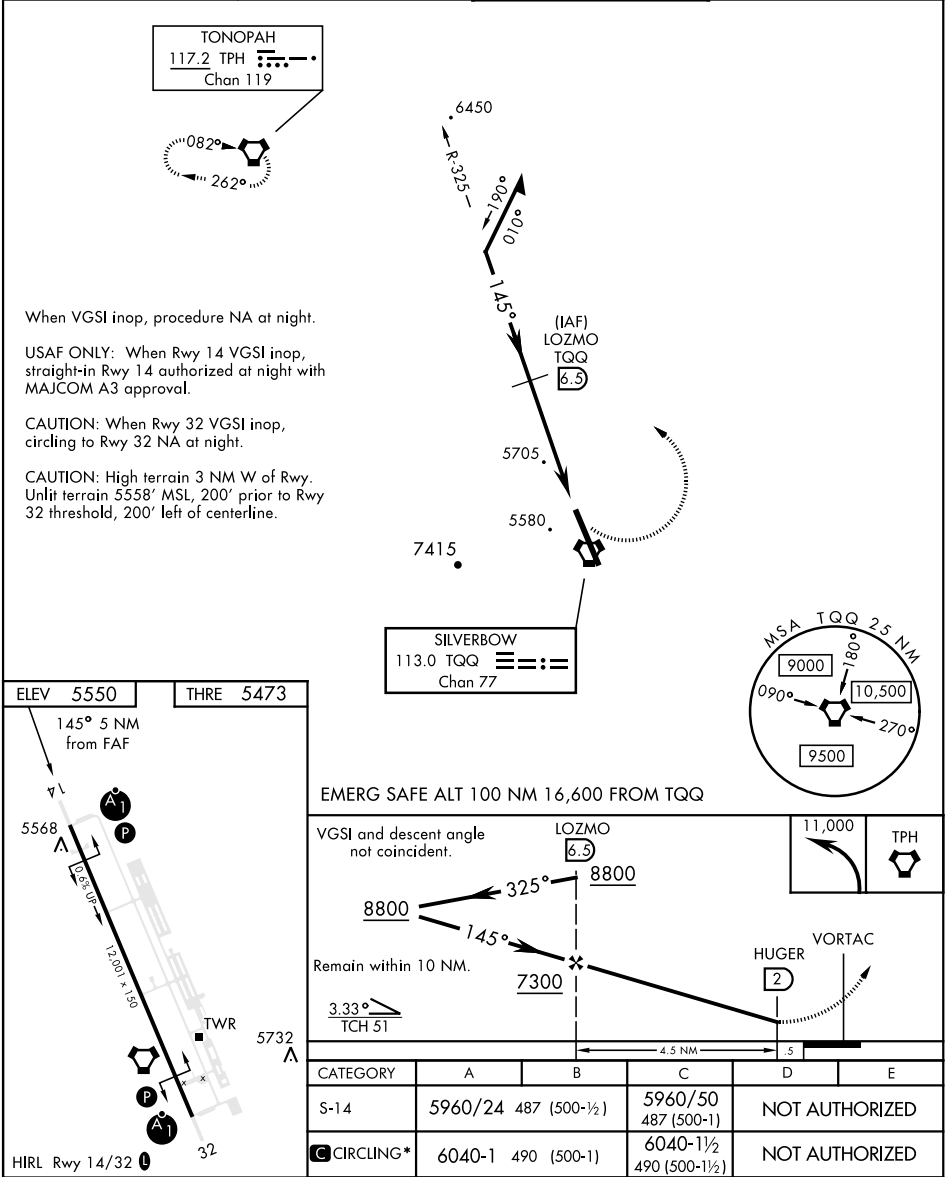
MISSED APPROACH: Turn left, climb to 11,000 direct to TPO
VORTAC and hold. Continue climb in holding to 11,000.

AWOS
113.0

NELLIS CONTROL
119.35 254.4

SILVERBOW TOWER
124.75 257.95

GND CON
127.25 335.5



VOR/DME Z RWY 14

SW-4, 03 DEC 2020 to 31 DEC 2020

SW-4, 03 DEC 2020 to 31 DEC 2020