

WAAS CH <b>69204</b> <b>W33A</b>	APP CRS <b>336°</b>	Rwy Idg <b>5950</b> TDZE <b>4316</b> Apt Elev <b>4316</b>
--	------------------------	---

RNAV (GPS) RWY 33

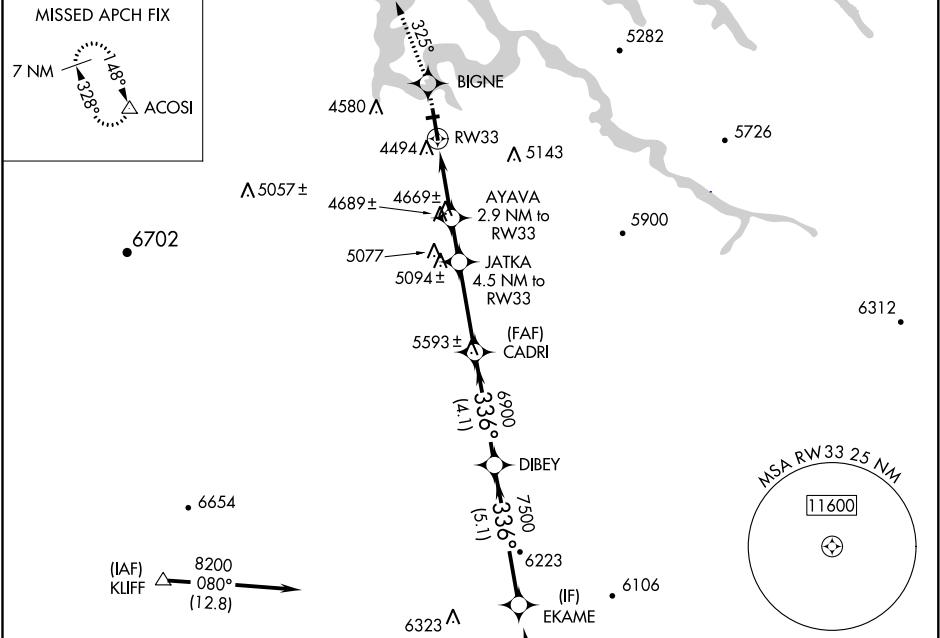
PAGE MUNI (PGA)

⚠

For uncompensated Baro-VNAV systems, LNAV/VNAV NA below -23°C (-9°F) or above 41°C (105°F).  
DME/DME RNP-0.3 NA. Circling NA to Rwy 7-25.

MISSED APPROACH: Climb to 8500 direct BIGNE and via 325° track to ACOSI and hold, continue climb-in-hold to 8500.

ASOS <b>120.625</b>	DENVER CENTER <b>127.55 256.875</b>	UNICOM <b>122.8 (CTAF) 0</b>
------------------------	--	---------------------------------



ELEV 4316	<b>D</b> TDZE 4316
-----------	--------------------

Procedure NA for arrivals at CELAY via V208 southbound.

8500

BIGNE

325° tr

ACOSI

VGSI and RNAV glidepath not coincident (VGSI Angle 3.00/TCH 30).

EKAME

\*LNAV only.

AYAVA 2.9 NM to RW33

JATKA 4.5 NM to RW33

CADRI

DIBEY

8200

5280

5800

6900

7500

8200

1.8 NM

1.1 NM

1.6 NM

3.3 NM

4.1 NM

5.1 NM

Procedure Turn NA

GP 3.00° TCH 50

CATEGORY	A	B	C	D
LPV DA	4566-1 250 (300-1)			
LNAV/VNAV DA	4744-1½ 428 (500-1½)			
LNAV MDA	4920-1 604 (700-1)	4920-1¾ 604 (700-1¾)	4920-2 604 (700-2)	
CIRCLING	4920-1 604 (700-1)	4920-1¾ 604 (700-1¾)	4920-2 604 (700-2)	

REIL Rwy 15 and 33 0

MRL Rwy 15-33 0

336° to RW33