

LOC I-ECC	APP CRS	Rwy Idg	8650
110.1	200°	TDZE	5600
		Apt Elev	5622

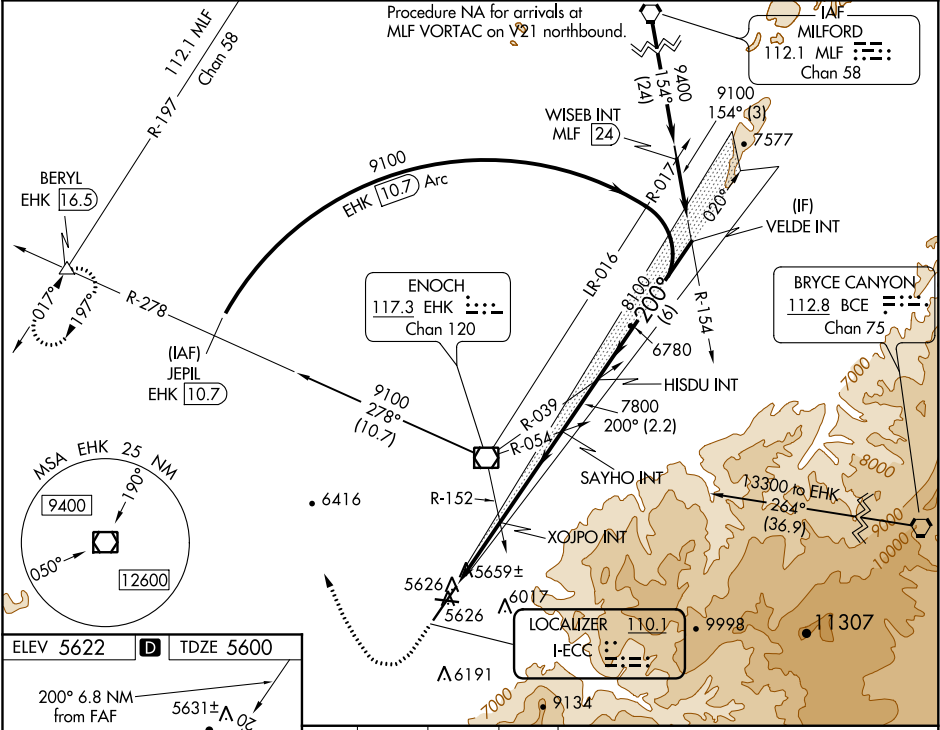
ILS or LOC RWY 20
CEDAR CITY RGNL(CDC)

NA Circling NA southeast of Rwy 2-20.
For inop ALS, increase S-LOC 20 Cats C/D visibility to 1 SM.
For inop ALS, increase S-ILS 20 visibility all Cats to ½ SM.

MALSR

MISSED APPROACH: Climb to 6100 then climbing right turn to 9900 on heading 322° and EHK VOR/DME R-278 to BERYL INT/EHK 16.5 DME and hold, continue climb-in-hold to 9900.
† Missed approach requires minimum climb of 230 feet per NM to 7300.

ASOS 119.025	SALT LAKE CITY CENTER 125.575 379.275	UNICOM 123.0 (CTAF)
------------------------	---	-------------------------------



ELEV 5622 **D** TDZE 5600

200° 6.8 NM from FAF

5631±

4822 X 60 0.9% UP

8650 X 150 0.4% UP

MIRL Rwy 8-26 **1**

HIRL Rwy 2-20 **1**

REIL Rwy 2 **1**

FAF to MAP 6.8 NM

Knots	60	90	120	150	180
Min:Sec	6:48	4:32	3:24	2:43	2:16

6100	9900	EHK R-278	BERYL	VGSI and ILS glidepath not coincident (VGSI angle 3.00/TCH 53).
		hdg 322°		
* LOC only. * Dual VOR receivers required.				
CATEGORY	A	B	C	D
S-ILS 20†	5820-½ 220 (200-½)			
S-ILS 20 #	5868-½ 268 (300-½)			
S-LOC 20	5960-½ 360 (400-½)		5960-⅝ 360 (400-⅝)	
CIRCLING	6000-1 378 (400-1)	6100-1 478 (500-1)	6120-1½ 498 (500-1½)	6180-2 558 (600-2)