

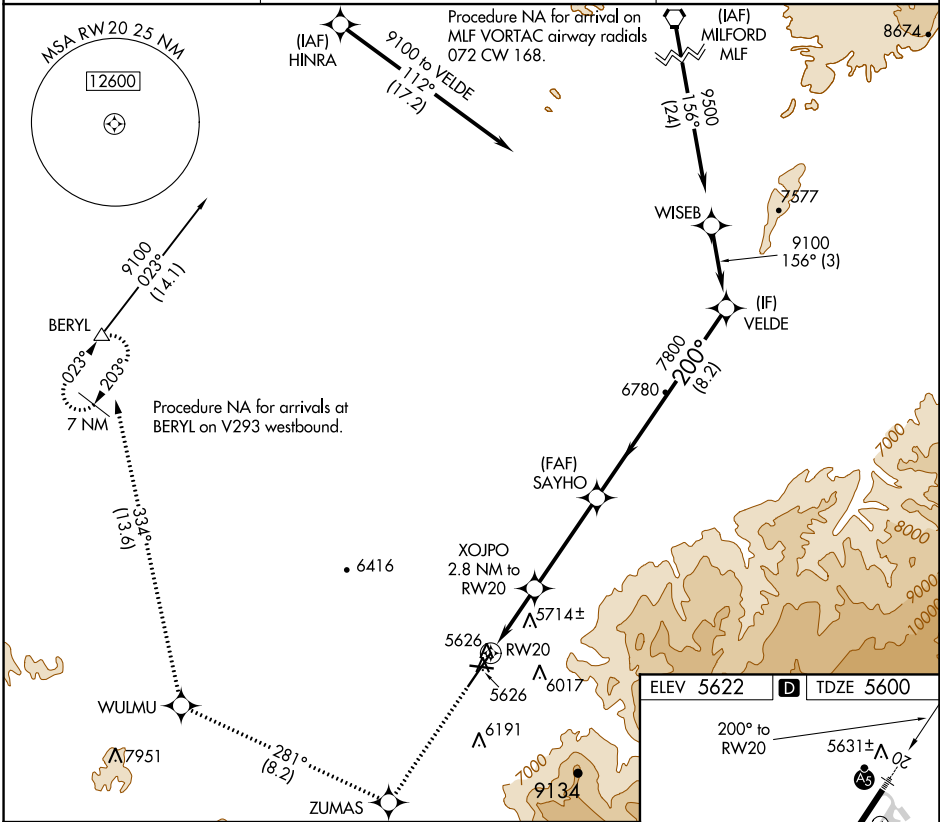
WAAS CH 72640 W20A	APP CRS 200°	Rwy Idg TDZE 5600 Apt Elev 5622
--	------------------------	---

RNAV (GPS) RWY 20
CEDAR CITY RGNL (CDC)

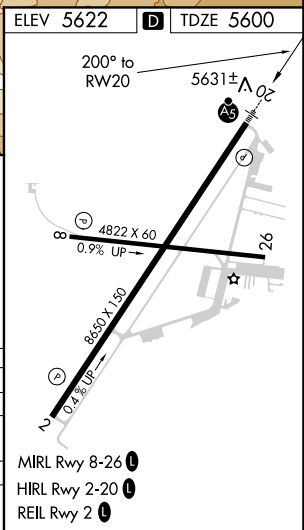
For uncompensated Baro-VNAV systems, LNAV/VNAV NA below -21°C (-5°F) or above 48°C (119°F). Circling NA southeast of Rwy 2-20. DME/DME RNP -0.3 NA. For Inop ALS, increase LNAV Cats C/D visibility to 1 3/8 SM.

MALSR MISSED APPROACH: Climb to 9800 direct ZUMAS and on track 281° to WULMU and on track 334° to BERYL and hold.

ASOS 119.025	SALT LAKE CITY CENTER 125.575 379.275	UNICOM 123.0 (CTAF) 0
------------------------	---	---------------------------------



9800	ZUMAS	tr 281°	WULMU	tr 334°	BERYL	VGSI and RNAV glidepath not coincident. (VGSI Angle 3.00/TCH 53).
*LNAV only						
			XOJPO 2.8 NM to RW20		SAYHO	VELDE
			*1.7 NM to RW20		7800	200° 9100
					6520*	7800
						GP 3.00° TCH 47
CATEGORY	A	B	C	D		
LPV DA		5820-1/2	220 (200-1/2)			
LNAV/VNAV DA		5978-3/4	378 (400-3/4)			
LNAV MDA	6180-1/2	580 (600-1/2)	6180-1 1/4	580 (600-1 1/4)		
CIRCLING	6180-1	558 (600-1)	6180-1 5/8	558 (600-1 5/8)	6180-2	558 (600-2)



SW-4, 03 DEC 2020 to 31 DEC 2020

SW-4, 03 DEC 2020 to 31 DEC 2020