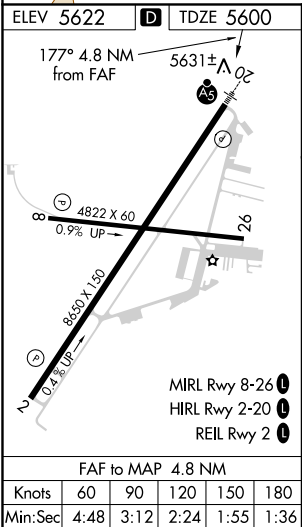
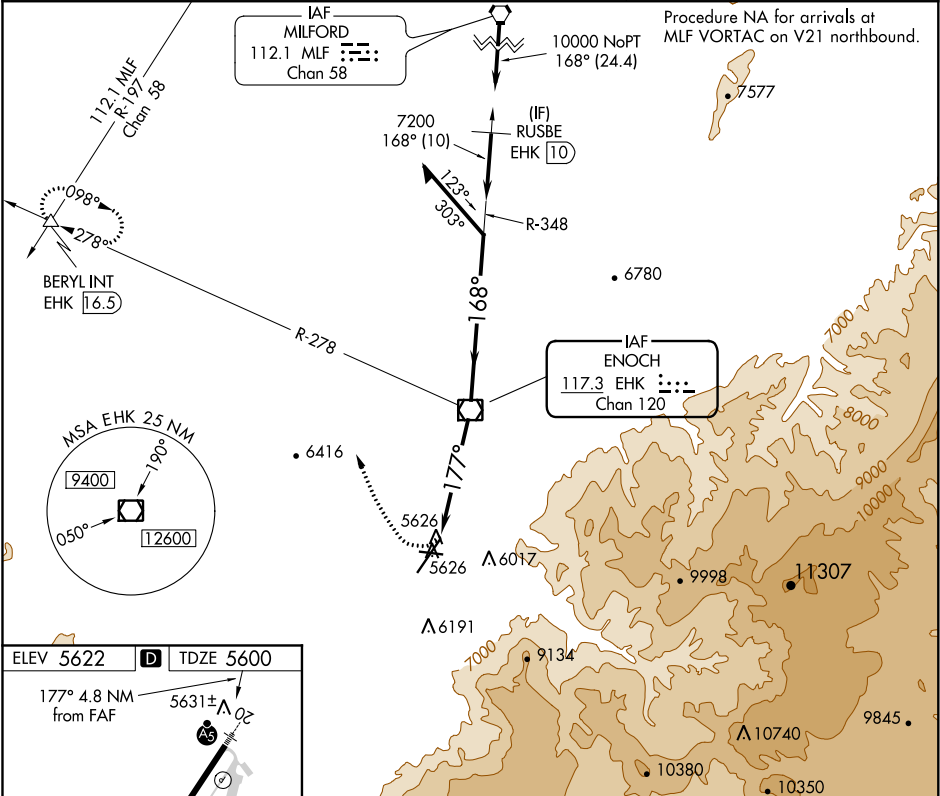




VOR/DME EHK <b>117.3</b> Chan <b>120</b>	APP CRS <b>177°</b>	Rwy Idg TDZE Apt Elev <b>8650</b> <b>5600</b> <b>5622</b>
--	------------------------	--

VOR RWY 20  
CEDAR CITY RGNL(CDC)

Inoperative table does not apply. Circling NA southeast of Rwy 2-20.	MALSR	MISSED APPROACH: Climbing right turn to 9500 on heading 322° and EHK VOR/DME R-278 to BERYL INT/EHK 16.5 DME and hold.
---	-------	--

ASOS <b>119.025</b>	SALT LAKE CITY CENTER <b>125.575 379.275</b>	UNICOM <b>123.0 (CTAF)</b>
------------------------	---	-------------------------------



9500 	EHK R-278	BERYL △	EHK VOR/DME 10700				Remain within 10 NM	
			EHK 3.2		≤ 3.07° TCH 53	177°	8700	
			EHK 4.8			7200	168°	
			1.6		3.2 NM			
CATEGORY	A		B		C		D	
S-20	6160-1 560 (600-1)				6160-1½ 560 (600-1½)			
 CIRCLING	6160-1 538 (600-1)				6160-1½ 538 (600-1½)		6180-2 558 (600-2)	