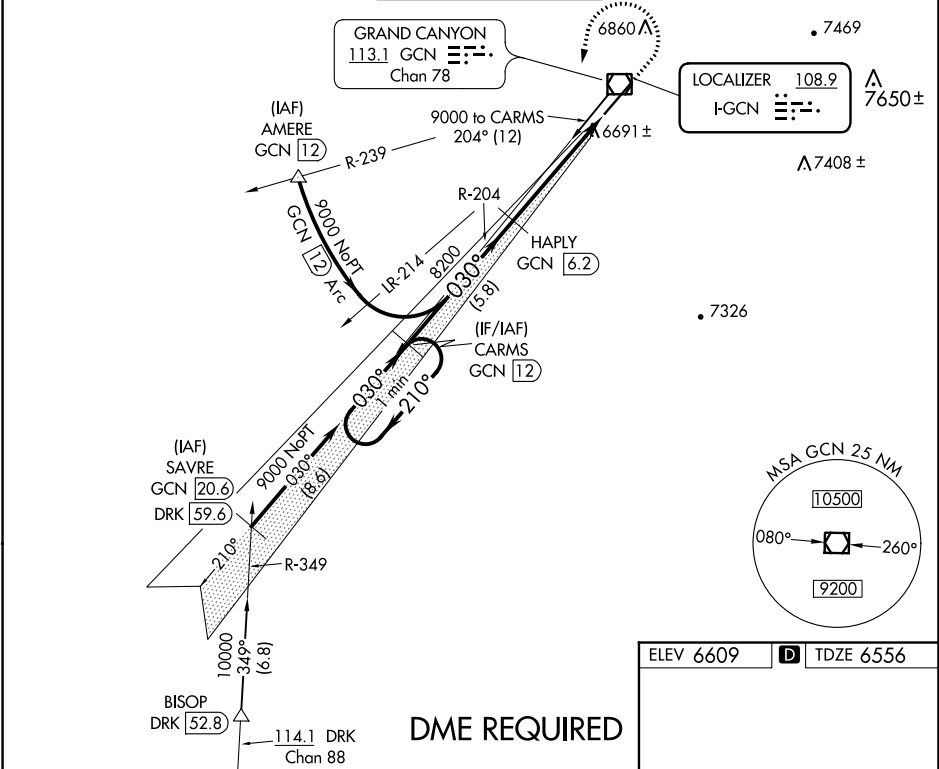


LOC I-GCN 108.9	APP CRS 030°	Rwy Idg 8999 TDZE 6556 Apt Elev 6609
---------------------------	------------------------	--

ILS or LOC RWY 3
GRAND CANYON NATIONAL PARK (GCN)

⚠ DME from GCN VOR/DME. Simultaneous reception of I-GCN and GCN DME required. DME required.	MISSED APPROACH: Climb to 7000 then climbing left turn to 9000 on heading 180° and on GCN VOR/DME R-204 direct CARMS/GCN 12 DME and hold.
--	---

ATIS 124.3	LOS ANGELES CENTER 124.85 319.2	CANYON TOWER* 119.0 (CTAF) 0	GND CON 121.9	UNICOM 122.95
----------------------	---	--	-------------------------	-------------------------



DME REQUIRED				
CATEGORY	A	B	C	D
S-ILS 3	6795-¾ 239 (200-¾)			
S-LOC 3	6960-1	404 (400-1)	6960-1⅛	404 (400-1⅛)
CIRCLING	7140-1 531 (600-1)	7200-1 591 (600-1)	7280-2 671 (700-2)	7620-3 1011 (1100-3)

