

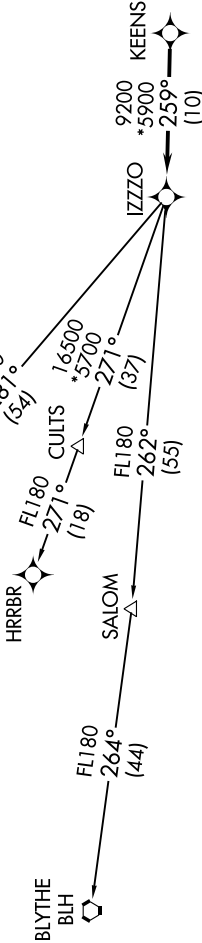
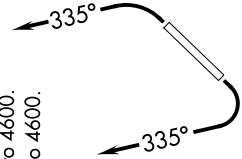
ATIS ★
118.6
CLNC DEL
124.8
GND CON
121.6
SCOTTSDALE TOWER ★
119.9
PHOENIX DEP CON
120.7 239.0

TOP ALTITUDE:
ASSIGNED BY ATC

- RNAV 1.
NOTE: Turbojets and turboprops only.
NOTE: RADAR required.
NOTE: GPS required.
NOTE: Aircraft requesting FL220 and below must file BLYTHE TRANSITION.
NOTE: Turbojets landing LAX, file MESSI TRANSITION.
NOTE: Aircraft landing other than LAX and turboprops landing at LAX: Requesting FL240 and above, file HRRBR TRANSITION.
NOTE: Aircraft departing KGEU and KGYR ATC assigned only.
NOTE: Rwy 21: Do not exceed 210K until established on assigned heading.

TAKEOFF MINIMUMS

- Rwy 3: Standard with minimum climb of 445' per NM to 4600.
Rwy 21: Standard with minimum climb of 300' per NM to 4600.



DEPARTURE ROUTE DESCRIPTION

TAKEOFF RUNWAY 3: Climbing left turn heading 335° or as assigned by ATC, thence. . . .
TAKEOFF RUNWAY 21: Climbing right turn heading 335° or as assigned by ATC. Thence. . . .
... expect RADAR vectors to KEENS, then on track 259° to IZZO, then on (transition).
Maintain ATC assigned altitude, expect filed altitude 3 minutes after departure.

- BLYTHE TRANSITION (IZZZO7.BLH)
HRRBR TRANSITION (IZZZO7.HRRBR)
MESSI TRANSITION (IZZZO7.MESSI)

NOTE: Chart not to scale.