

APP CRS	Rwy Idg	7110
032°	TDZE	1470
	Apt Elev	1510

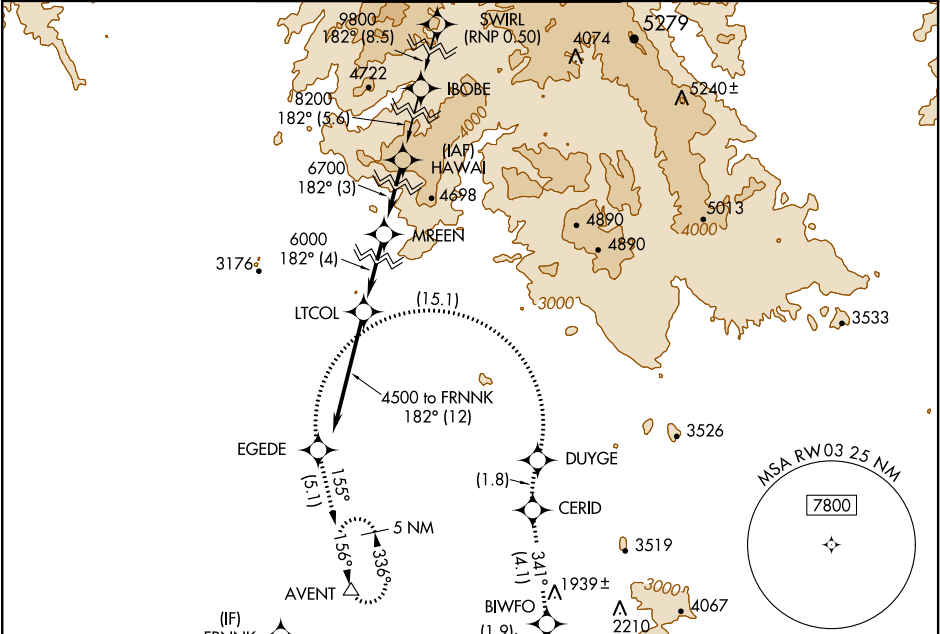
RNAV (RNP) Y RWY 3

SCOTTSDALE (SDL)

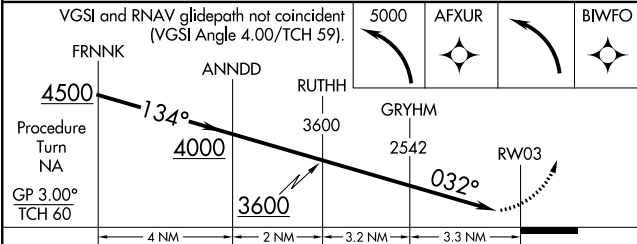
RF and GPS required. Visibility reduction by helicopters NA.  
For uncompensated Baro-VNAV systems, procedure NA below  
1°C (31°F) or above 54°C (130°F). When local altimeter setting not  
received procedure NA. Missed approach requires RNP less than 1.0.

MISSED APPROACH: Climb to 5000 via left turn to  
AFXUR, and via left turn to BIWFO, and via track 341°  
to CERID, and via right turn to DUYGE, and via left turn  
to EGEDE, and via track 155° to AVENT and hold.

ATIS ★	PHOENIX APP CON	SCOTTSDALE TOWER ★	GND CON	CLNC DEL
118.6	120.7 239.0	119.9 (CTAF) 0	121.6	124.8



ELEV 1510	TDZE 1470
-----------	-----------



CATEGORY	A	B	C	D
RNP 0.30 DA	1829-1¼	359 (400-1¼)		NA

AUTHORIZATION REQUIRED

