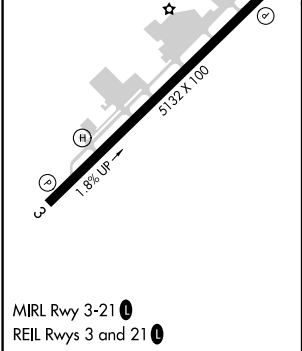
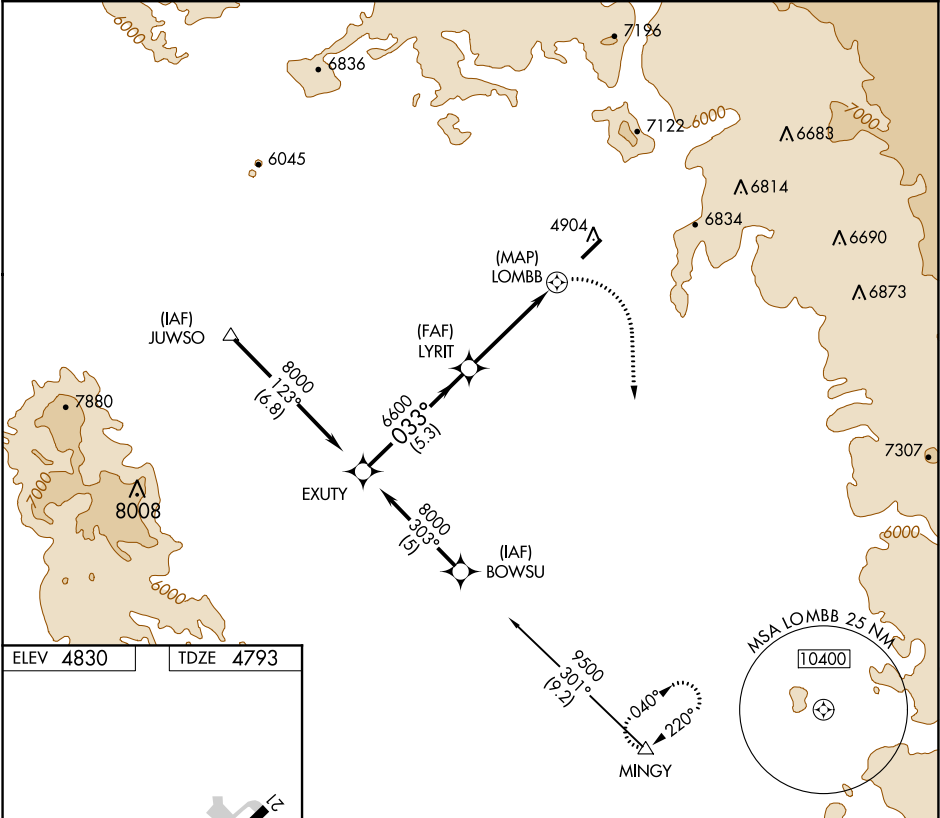


APP CRS	Rwy Idg	5132
033°	TDZE	4793
	Apt Elev	4830

GPS RWY 3  
SEDONA (SE/Z)

<p>When local alimeter not received, procedure not authorized. Cat D circling not authorized northwest of Rwy 3-21. Circling Rwy 21 NA at night.</p>	<p>MISSED APPROACH: Climbing right turn to 12000 direct MINGY WP and hold.</p>
--	--

AWOS-3PT 118.525	PHOENIX APP CON 126.375 236.775	UNICOM 123.0 (CTAF) 0
---------------------	------------------------------------	--------------------------



EXUTY	VGSI and descent angles not coincident (VGSI Angle 3.00/TCH 43).				12000	MINGY
8000	033°	6600	3.00° TCH 50	LOMBB		
Procedure Turn NA	5.3 NM	4.4 NM	1.3 NM			
CATEGORY	A	B	C	D		
S-3	6140-1½ 1347 (1400-1½)	6240-1½ 1447 (1500-1½)	6560-3	1767 (1800-3)		
CIRCLING	6140-1½ 1310 (1400-1½)	6240-1½ 1410 (1500-1½)	NA			