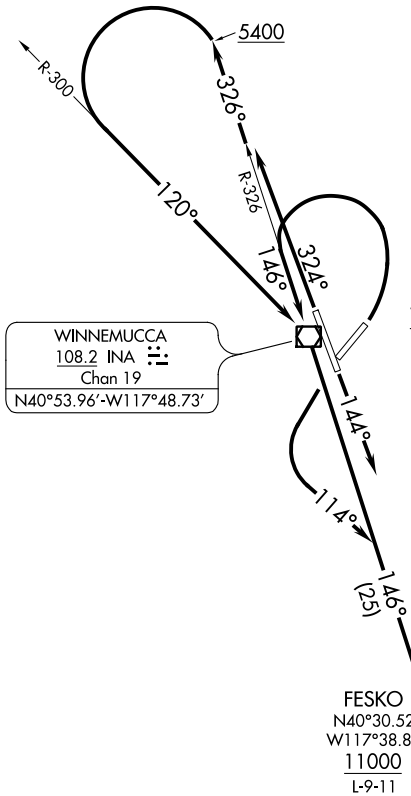


WINNEMUCCA ONE DEPARTURE (OBSTACLE)

WINNEMUCCA MUNI (WMC)
WINNEMUCCA, NEVADA

ASOS
120.175
SALT LAKE CITY CENTER
132.25 338.35
RENO RADIO
122.3
CTAF
122.8



TAKEOFF MINIMUMS

- Rwy 32: Standard with minimum climb of 235' per NM to 11000 or 4900-3 for VCOA.
- Rwy 2: Standard with minimum climb of 500' per NM to 7800 or 4900-3 for VCOA.
- Rwy 14: Standard with minimum climb of 290' per NM to 11000 or 4900-3 for VCOA.
- Rwy 20: Standard with minimum climb of 425' per NM to 7800 or 4900-3 for VCOA.

BATTLE MOUNTAIN
112.2 BAM
Chan 59

FESKO
N40°30.52'
W117°38.88'
11000
L-9-11

R-246

(NOTES CONTINUED ON FOLLOWING PAGE)

NOTE: Chart not to scale.

DEPARTURE ROUTE DESCRIPTION

TAKEOFF RUNWAY 2: Climbing left turn to intercept INA R-326 inbound to INA VOR/DME, thence. . . .

TAKEOFF RUNWAY 14: Climb on heading 144° to intercept INA VOR/DME R-146 outbound, thence. . . .

TAKEOFF RUNWAY 20: Climbing left turn heading 114° to intercept INA VOR/DME R-146 outbound, thence. . . .

TAKEOFF RUNWAY 32: Climb on heading 324° to intercept INA R-326 outbound to 5400 then climbing left turn to intercept INA R-300 inbound to INA VOR/DME, thence. . . .

. . . all aircraft climb on the INA VOR/DME R-146 southeast bound to cross FESKO at or above 11000 before proceeding on assigned route of flight.

VCOA: Obtain ATC approval for VCOA when requesting IFR clearance. Climb in visual conditions to cross Winnemucca Muni Airport at or above 9100 before proceeding on course.