

SW-4, 03 DEC 2020 to 31 DEC 2020

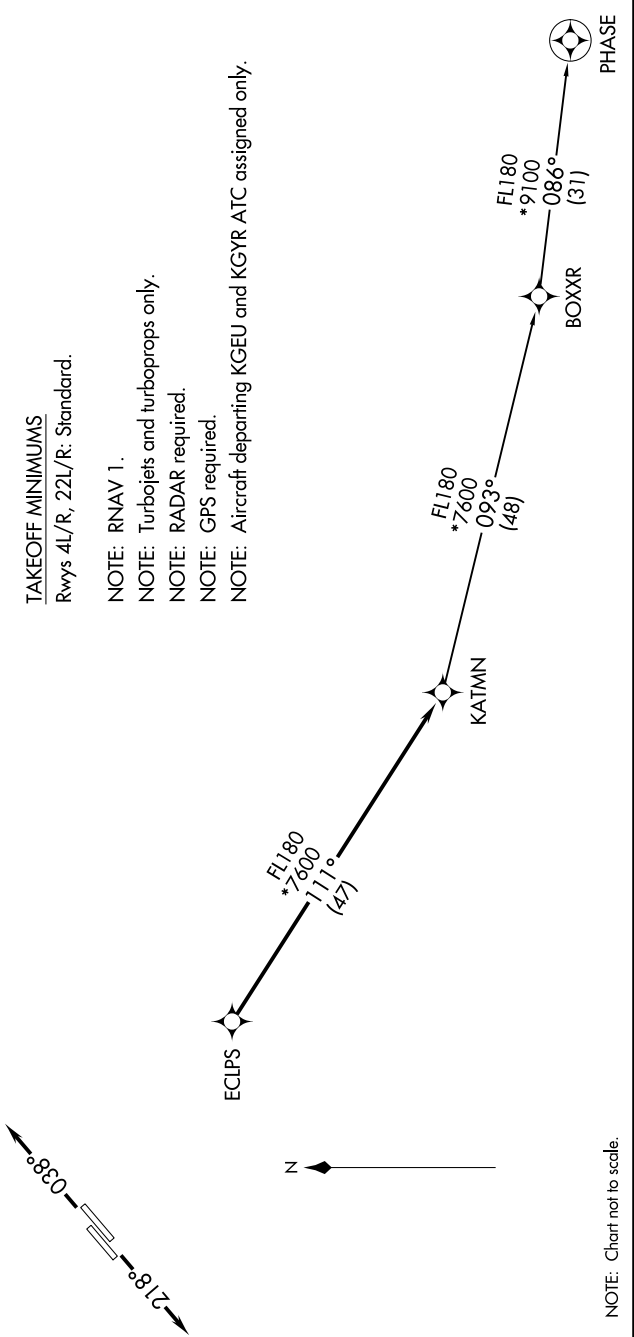
TOP ALTITUDE:
ASSIGNED BY ATC

ATIS
128.325
GND CON
124.4
CHANDLER TOWER *
126.1 (Rwy 4L-22R)
133.1 (Rwy 4R-22L)
PHOENIX DEP CON
123.7 363.0

DEPARTURE ROUTE DESCRIPTION

TAKEOFF RUNWAYS 4L/R: Climb heading 038° or as assigned by ATC. Thence. . . .
TAKEOFF RUNWAYS 22L/R: Climb heading 218° or as assigned by ATC. Thence. . . .
. . . .on RADAR vectors to ECLPS, then on track 111° to KATMN, then on (transition).
Maintain ATC assigned altitude, expect filed altitude 3 minutes after departure.

PHASE TRANSITION (KATMN6.PHASE)



SW-4, 03 DEC 2020 to 31 DEC 2020