

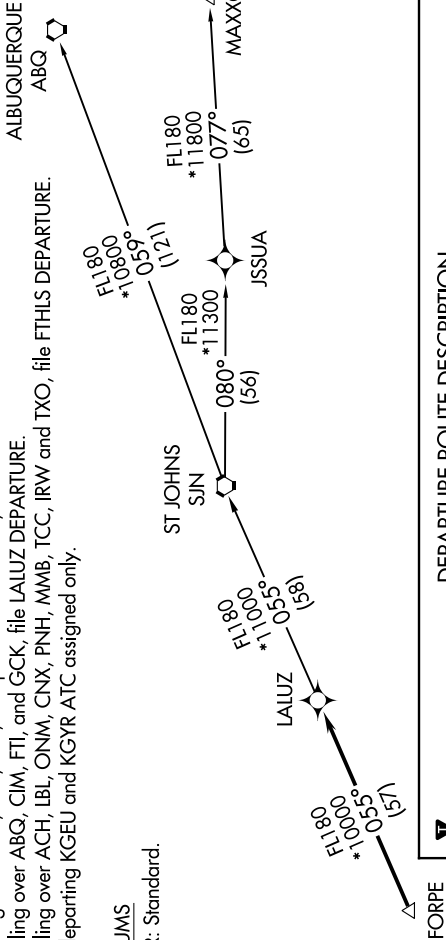
ATIS
128.325
GND CON
124.4
CHANDLER TOWER ★
126.1 (Rwy 4L-22R)
133.1 (Rwy 4R-22L)
PHOENIX DEP CON
123.7 363.0

NOTE: RNAV 1.
NOTE: Turbojets and turboprops only.
NOTE: RADAR required.
NOTE: GPS required.
NOTE: SJN TRANSITION for ABQ terminal arrivals only.
NOTE: MAXXO TRANSITION ATC assigned only.
NOTE: Aircraft filing over DEN, RSK, ALS, and points north of ALS, file YOTES DEPARTURE.
NOTE: Aircraft filing over ABQ, CIM, FTI, and GCK, file LALUZ DEPARTURE.
NOTE: Aircraft filing over ACH, LBL, ONM, CNX, PNH, MMB, TCC, IRW and TXO, file FTHLS DEPARTURE.
NOTE: Aircraft departing KGEU and KGYR ATC assigned only.

TAKEOFF MINIMUMS
Rwys 4L/R, 22L/R: Standard.



TOP ALTITUDE:
ASSIGNED BY ATC



FORPE

DEPARTURE ROUTE DESCRIPTION

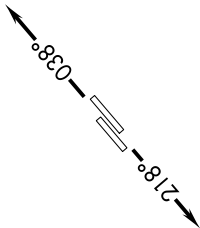
TAKEOFF RUNWAYS 4L/R: Climb heading 038° or as assigned by ATC, thence. . . .
TAKEOFF RUNWAYS 22L/R: Climb heading 218° or as assigned by ATC, thence. . . .
... expect RADAR vectors to FORPE, then on track 055° to LALUZ, then on (transition).
Maintain ATC assigned altitude, expect filed altitude 3 minutes after departure.

ALBUQUERQUE TRANSITION (LALUZ6.ABQ)

MAXXO TRANSITION (LALUZ6.MAXXO)

ST JOHNS TRANSITION (LALUZ6.SJN)

NOTE: Chart not to scale.



LALUZ SIX DEPARTURE (RNAV)
(LALUZ6.LALUZ) 24MAY18

CHANDLER, ARIZONA
CHANDLER MUNI (CHD)

AL-6494 (FAA)

CHANDLER MUNI (CHD)
CHANDLER, ARIZONA