

WAAS CH 49224 W14A	APP CRS 136°	Rwy Idg TDZE 5736 Apt Elev 5737
--	------------------------	---

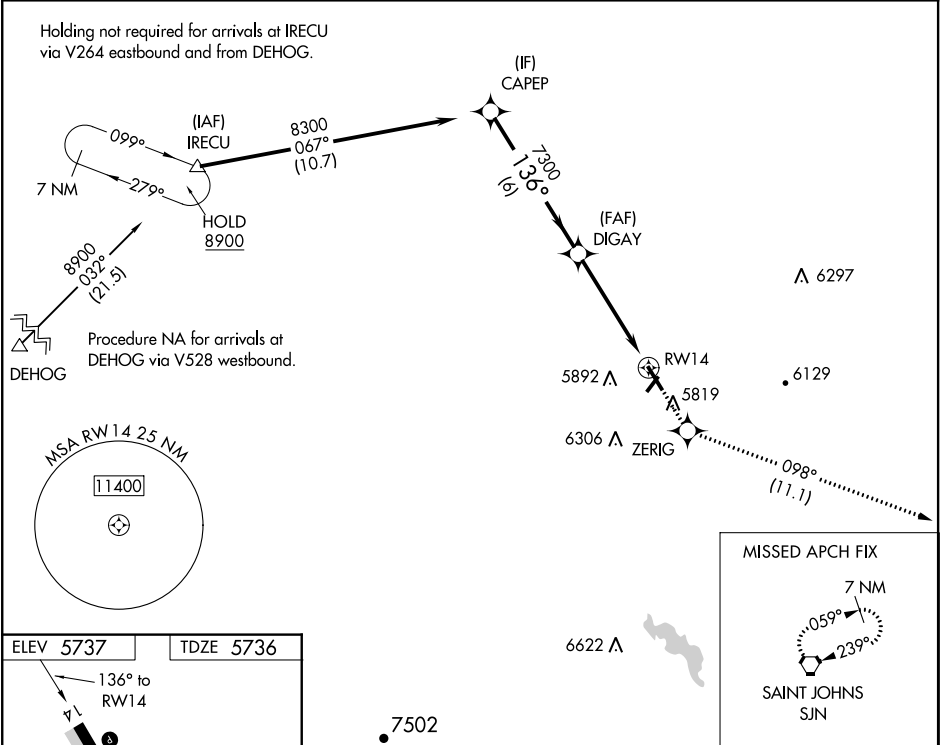
RNAV (GPS) RWY 14

ST JOHNS INDUSTRIAL AIR PARK (SJIN)

⚠ Night landing Rwy 3, 32 NA. When local altimeter setting not received, use Show Low altimeter setting and increase all MDA 180 feet. DME/DME RNP-0.3 NA. Helicopter visibility reduction below 3/4 SM NA. VDP NA with Show Low altimeter setting.

MISSED APPROACH: Climb to 9000 direct ZERIG and on track 098° to SJN VORTAC and hold, continue climb-in-hold to 9000.

ASOS 134.225	ALBUQUERQUE CENTER 124.325 288.25	UNICOM 122.8 (CTAF) 0
------------------------	---	---------------------------------



CAPEP		9000	ZERIG	tr	SJN
8300		7300	1.2 NM to RW14	RW14	
136°		3.00° TCH 40	3.6 NM	1.2 NM	
CATEGORY	A	B	C	D	
LP MDA	6140-1	404 (500-1)	NA		
LNAV MDA	6140-1	404 (500-1)	NA		
CIRCLING	6240-1 503 (600-1)	6280-1 543 (600-1)	NA		

SW-4, 03 DEC 2020 to 31 DEC 2020

SW-4, 03 DEC 2020 to 31 DEC 2020