

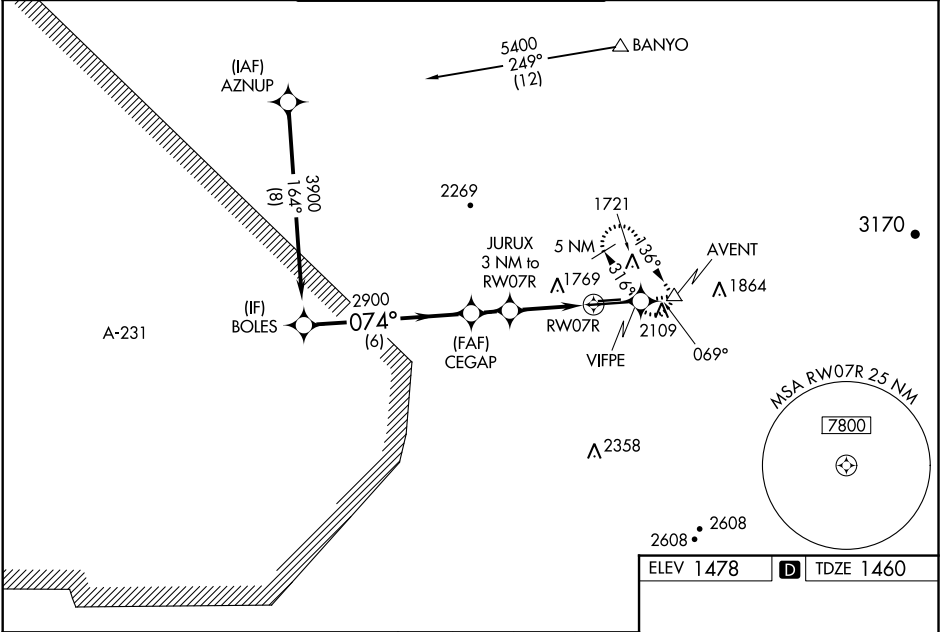
WAAS CH 72917 W07A	APP CRS 074°	Rwy Idg TDZE Apt Elev	7299 1460 1478
--	------------------------	-----------------------------	---

RNAV (GPS) RWY 7R
PHOENIX DEER VALLEY (DVT)

⚠ When VGSI inop, Circling Rwy 25R NA at night. Baro-VNAV NA when using Scottsdale altimeter setting. For uncompensated Baro-VNAV systems, LNAV/VNAV NA below -17°C (2°F) or above 45°C (113°F). DME/DME RNP-0.3 NA. VDP NA when using Scottsdale altimeter setting. When local altimeter setting not received, use Scottsdale altimeter setting: Increase LPV DA to 1822 and all visibilities ½ SM. Increase LNAV/VNAV DA to 2160, increase all MDA's 40 feet and increase Circling Cat B/C visibility ¼ mile. Circling NA north of Rwy 7R-25L at night.

MISSED APPROACH: Climb to 5000 direct VIFPE and track 069° to AVENT and hold, continue climb-in-hold to 5000. When directed by ATC, continue climb-in-hold to 7000.

ATIS 126.5	PHOENIX APP CON 120.7 239.0	DEER VALLEY TOWER ★ 118.4 (070°-250°) (CTAF) 120.2 (251°-069°)	GND CON 121.8	CLNC DEL 123.9	UNICOM 122.95
----------------------	---------------------------------------	--	-------------------------	--------------------------	-------------------------



	BOLES	CEGAP	JURUX 3 NM to RWY 7R	5000	VIFPE	tr 069°	AVENT
	3900	2900	*2440				
	GP 3.00° TCH 42						
	6 NM	1.4 NM	1.2 NM	1.8 NM			
CATEGORY	A	B	C	D			
LPV DA		1795-1½	335 (400-1½)				
LNAV/VNAV DA		2133-2½	673 (700-2½)				
LNAV MDA	2060-1	600 (600-1)	2060-1¾	600 (600-1¾)			
CIRCLING	2400-1¼ 922 (1000-1¼)	2420-1¼ 942 (1000-1¼)	2420-2¾ 942 (1000-2¾)	2460-3 982 (1000-3)			

ELEV 1478 **D** TDZE 1460

074° to RWY 7R

TWR 1637 ±

4500 X 75

0.5% UP

81% X 100

0.4% DOWN

0.5% UP

25R

25L

MIRL Rwy 7L-25R and 7R-25L
REIL Rwy 7L, 7R, 25L, and 25R

SW-4, 03 DEC 2020 to 31 DEC 2020

SW-4, 03 DEC 2020 to 31 DEC 2020