

LOC I-CGZ <u>111.15</u>	APP CRS 048°	Rwy Idg 5200 TDZE 1458 Apt Elev 1464
-----------------------------------	------------------------	---

ILS or LOC RWY 5
CASA GRANDE MUNI (CGZ)

	DME required for LOC only.
--	----------------------------

T	Circling NA for Cat C and D northwest of Rwy 5-23. Autopilot coupled
A NA	approach NA below 1650. DME from TFD VORTAC. Simultaneous reception of I-CGZ and TFD DME required. For inop ALS, increase S-LOC 5 Cat C/D visibility to 1 SM.

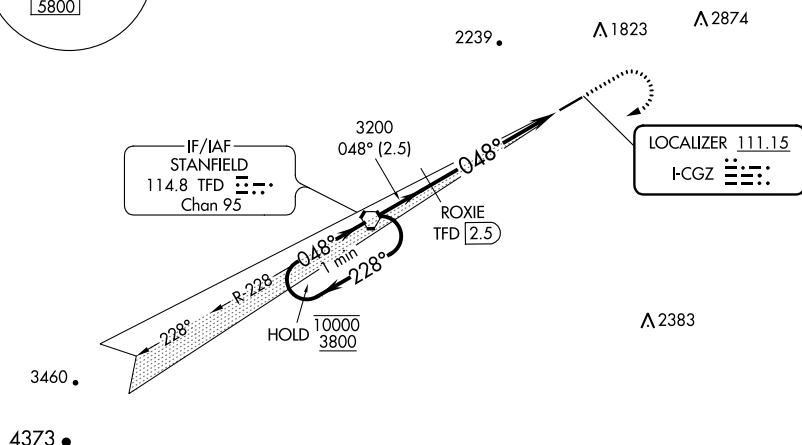
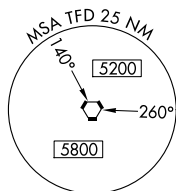
MALSR



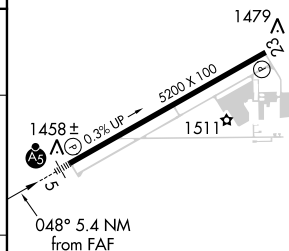
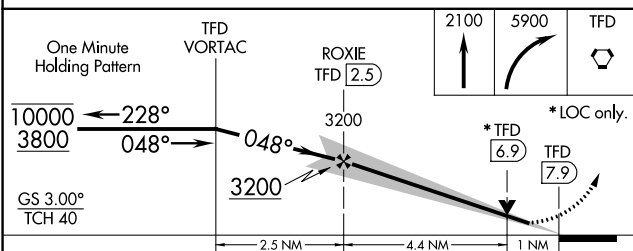
MISSED APPROACH: Climb to 2100 then climbing right turn to 5900 direct STANFIELD VORTAC and hold. Continue climb in hold to 5900.


AWOS-3PT
132.175

ALBUQUERQUE CENTER
125.4 269.3

UNICOM
122.7 (CTAF) **L**

ELEV 1464		TDZE 1458
-----------	--	-----------



CATEGORY	A	B	C	D
S-ILS 5	1708-1/2 250 (300-1/2)			
S-LOC 5	1800-1/2 342 (400-1/2)		1800-5/8 342 (400-5/8)	
 CIRCLING	1960-1 496 (500-1)		1960-1 1/2 496 (500-1 1/2)	2260-2 1/2 796 (800-2 1/2)

MIRL Rwy 5-23