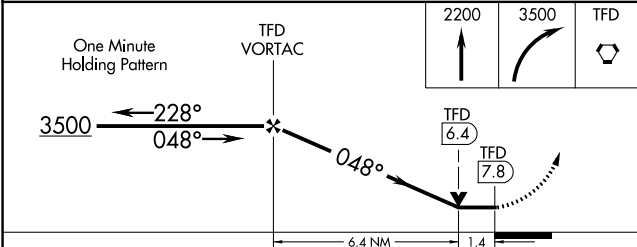
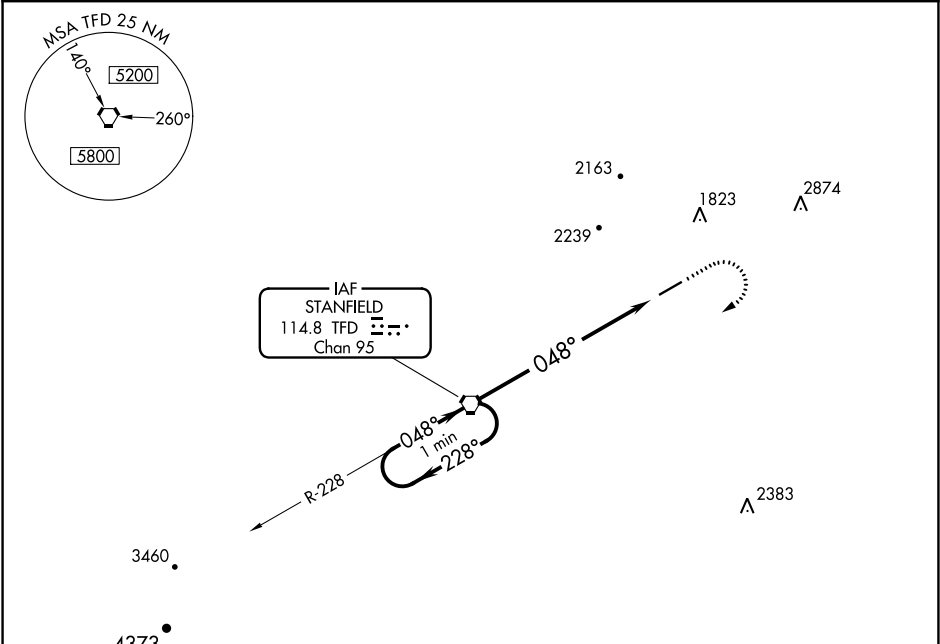


VORTAC TFD	APP CRS	Rwy Idg	5200
114.8	048°	TDZE	1458
Chan 95		Apt Elev	1464

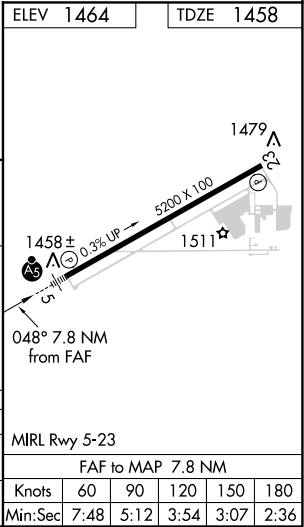
VOR RWY 5
CASA GRANDE MUNI (CGZ)

For inop ALS, increase S-5 Cats A/B visibility to 1 mile. Rwy 5 helicopter visibility reduction below 3/4 SM NA. Circling Rwy 23 NA at night.	MALSR	MISSED APPROACH: Climb to 2200, then climbing right turn to 3500 direct TFD VORTAC and hold.
---	-------	--

AWOS-3PT 132.175	ALBUQUERQUE CENTER 125.4 269.3	UNICOM 122.7 (CTAF)
---------------------	-----------------------------------	------------------------



CATEGORY	A	B	C	D
S-5	1960-3/4	502 (500-3/4)	NA	
CIRCLING	1960-1	496 (500-1)	NA	



SW-4, 03 DEC 2020 to 31 DEC 2020

SW-4, 03 DEC 2020 to 31 DEC 2020