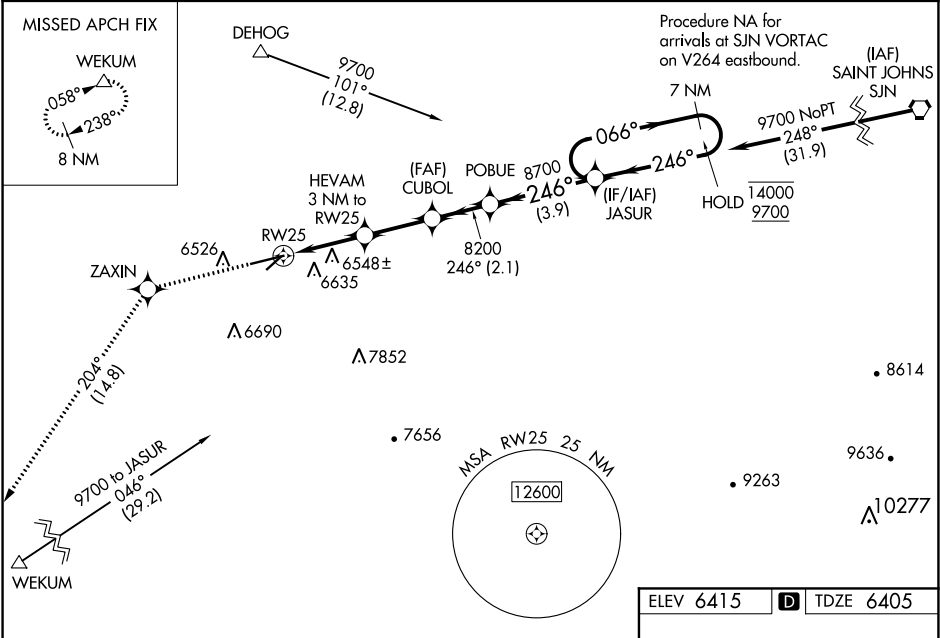


WAAS CH <b>72718</b> <b>W25A</b>	APP CRS <b>246°</b>	Rwy Idg TDZE Apt Elev <b>7200</b> <b>6405</b> <b>6415</b>
--	------------------------	--

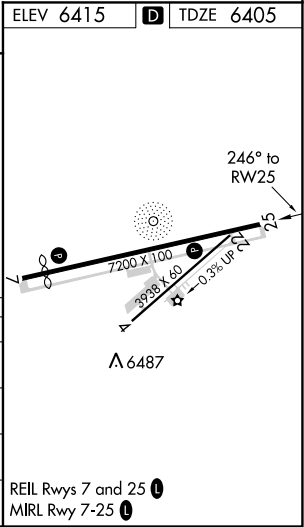
RNAV (GPS) RWY 25  
SHOW LOW RGNL (SOW)

RNP APCH.	MISSED APPROACH: Climb to 13000 direct ZAXIN and on track 204° to WEKUM and hold, continue climb-in-hold to 13000.
<div><div>▼</div><div>▲</div></div> <div>Circling to Rwy 4 NA at night. Circling NA southeast of Rwys 4 and 25. For uncompensated Baro-VNAV systems, LNAV/VNAV NA below -14°C (7°F) or above 45°C (114°F).</div>	

AWOS-3 <b>118.075</b>	ALBUQUERQUE CENTER <b>132.9 239.05</b>	UNICOM <b>123.0 (CTAF) 0</b>
--------------------------	---	---------------------------------



13000 ↑	ZAXIN ✧	tr 204°	WEKUM △					
* LNAV only				POBUE	JASUR	7 NM Holding Pattern		
HEVAM 3 NM to RW25 * 1.1 NM to RW25				CUBOL 8200	066° → 14000 ← 246° 9700			
RW25				7400*	8700	GP 3.00° TCH 51		
1.1 NM 1.9 NM 2.5 NM 2.1 NM 3.9 NM								
CATEGORY		A		B	C	D		
LPV DA	6605-¾ 200 (200-¾)							
LNAV/VNAV DA	6704-⅞ 299 (300-⅞)							
LNAV MDA	6800-1 395 (400-1)			6800-1⅛ 395 (400-1⅛)				
CIRCLING	6840-1 425 (500-1)		6880-1 465 (500-1)		7180-2¼ 765 (800-2¼)		7340-3 925 (1000-3)	



SW-4, 03 DEC 2020 to 31 DEC 2020

SW-4, 03 DEC 2020 to 31 DEC 2020