

WAAS CH 82602 W34A	APP CRS 344°	Rwy Idg 8500 TDZE 707 Apt Elev 707
--	------------------------	---

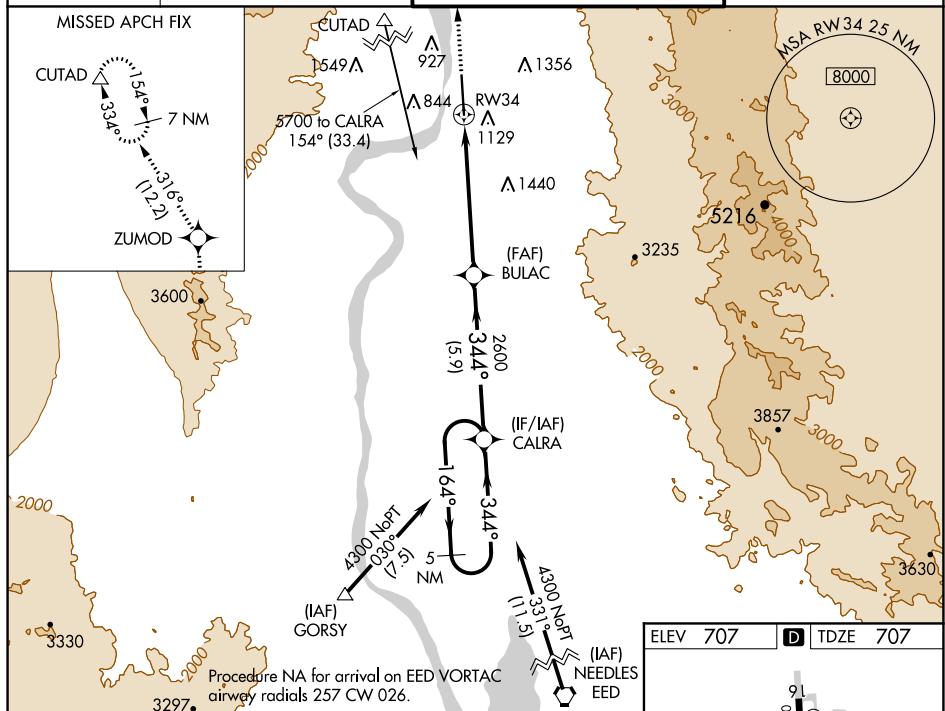
RNAV (GPS) RWY 34

LAUGHLIN/BULLHEAD INTL (IFP)

- T** For uncompensated Baro-VNAV systems, LNAV/VNAV NA below -16°C (4°F) or above 54°C (130°F).
- A** Rwy 34 helicopter visibility reduction below ¾ SM NA.
DME/DME RNP-0.3 NA.
Circling Rwy 16 NA at night.

MISSED APPROACH: Climb to 7600 direct ZUMOD and on track 316° to CUTAD and hold, continue climb-in-hold to 7600.

ATIS★ 119.825	LOS ANGELES CENTER 134.65 360.65	BULLHEAD TOWER★ 123.9 (CTAF) 0	GND CON 118.25
-------------------------	--	--	--------------------------



7600 ↑	ZUMOD ✦	fr 316°	CUTAD △	VGS1 and RNAV glidepath not coincident (VGS1 Angle 3.00/TCH 45).				5 NM Holding Pattern
*LNAV only				BULAC	CALRA			
				164° → 4300 ← 344° 2600 GP 3.00° TCH 52				
CATEGORY		A		B		C		D
LPV	DA	1352-2½ 645 (700-2½)						
LNAV/ VNAV	DA	1506-3 799 (800-3)						
LNAV	MDA	1740-1¼ 1033 (1100-1¼)	1740-1½ 1033 (1100-1½)	1740-3		1033 (1100-3)		
C CIRCLING		1740-1¼ 1033 (1100-1¼)	1740-1½ 1033 (1100-1½)	1800-3		2340-3 1633 (1700-3)		

