

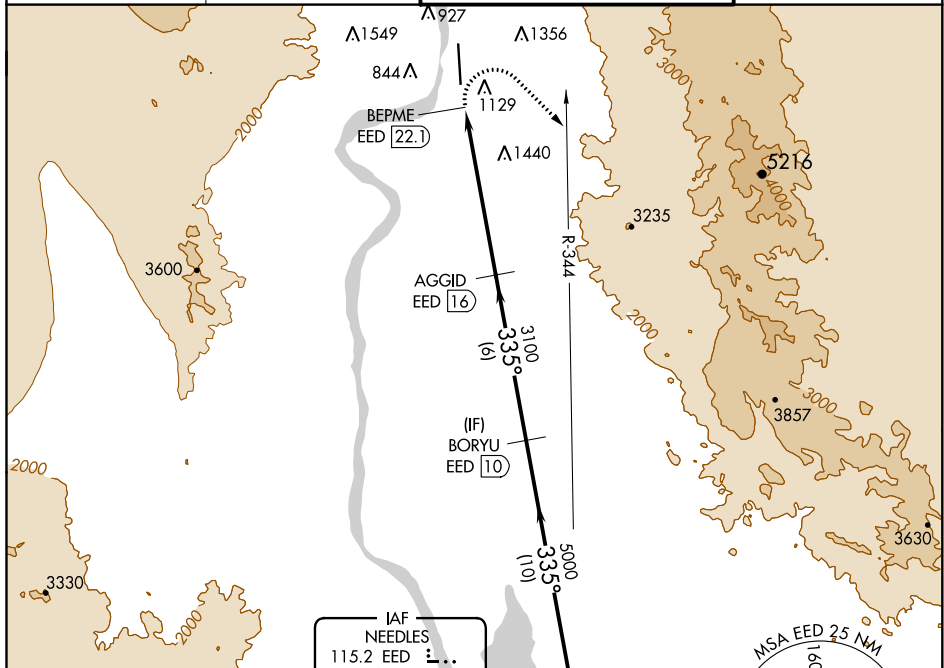
VORTAC EED 115.2 Chan 99	APP CRS 335°	Rwy Idg 8500 TDZE 707 Apt Elev 707
--	------------------------	---

VOR RWY 34
LAUGHLIN/BULLHEAD INTL (IFP)

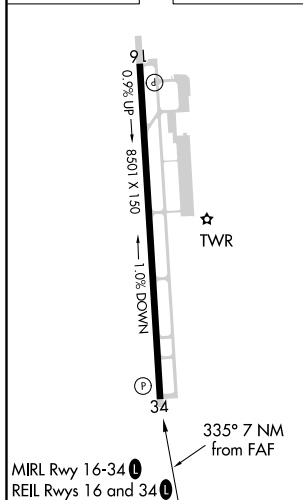
T Rwy 34 helicopter visibility reduction below $\frac{3}{4}$ SM NA.
A DME required. Circling Rwy 16 NA at night.

MISSED APPROACH: Climbing right turn to 6000 on heading 120° and EED VORTAC R-344 to EED VORTAC and hold.

<p>ATIS★</p> <p>119.825</p>	<p>LOS ANGELES CENTER</p> <p>134.65 360.65</p>	<p>BULLHEAD TOWER★</p> <p>123.9(CTAF) 0</p>	<p>GND CON</p> <p>118.25</p>
------------------------------------	---	--	-------------------------------------



ELEV 707	D	TDZE 707
----------	----------	----------



<div>6000</div> <div><div>hdg 120°</div></div> <div>EED R-344</div> <div>EED</div>		<div>EED VORTAC</div>		
<div>BEPME EED 22.1</div> <div>3.18°</div> <div>TCH 45</div> <div>3100</div>		<div>AGGID EED 16</div>	<div>BORYU EED 10</div>	<div>6000</div>
0.9		6.1 NM	6 NM	10 NM
CATEGORY	A	B	C	D
S-34	2840-1¼ 2133 (2200-1¼)	2840-1½ 2133 (2200-1½)	2840-3	2133 (2200-3)
C CIRCLING	2840-1¼ 2133 (2200-1¼)	2840-1½ 2133 (2200-1½)	2840-3	2133 (2200-3)