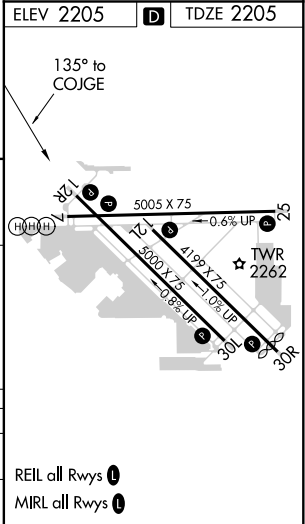
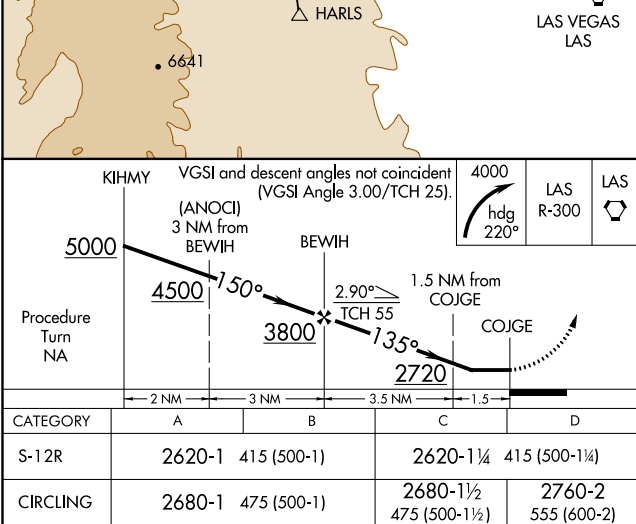
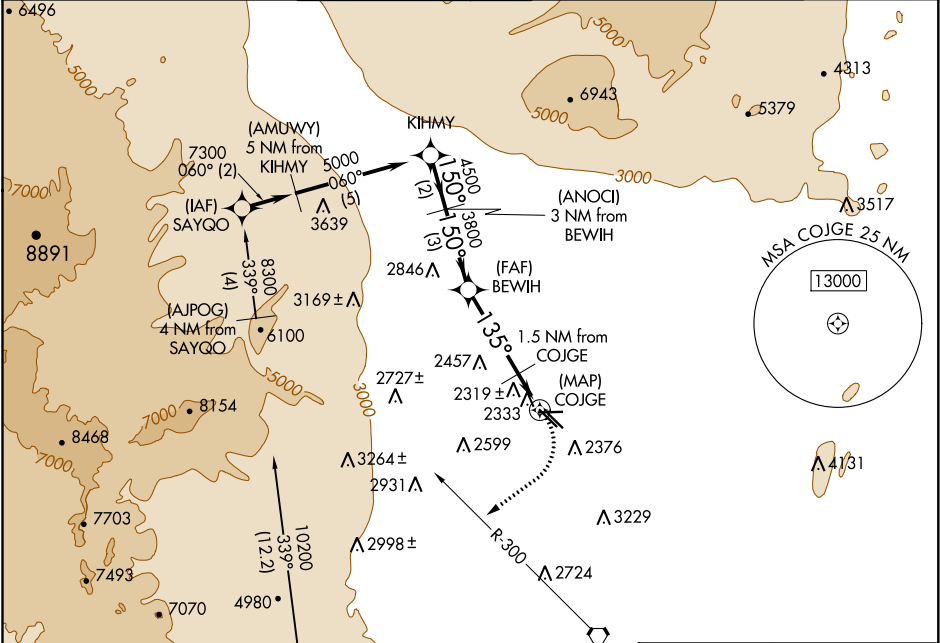


APP CRS	Rwy Idg	5000
135°	TDZE	2205
	Apt Elev	2205

GPS RWY 12R
NORTH LAS VEGAS (VGT')

<p>NA</p> <p>When local altimeter setting not received, use McCarran Intl altimeter setting and increase all MDA 40 feet and S-12R Cat D visibility ¼ mile. Circling to Rwy 12L-30R NA.</p>	<p>MISSED APPROACH: Climbing right turn to 4000 via heading 220° and LAS R-300 to LAS VORTAC.</p>
--	--

ATIS 118.05	LAS VEGAS APP CON 119.4 360.85	NORTH LAS VEGAS TOWER* 125.7 (CTAF) 360.75	GND CON 121.7	CLNC DEL 124.0	UNICOM 122.95
----------------	-----------------------------------	---	------------------	-------------------	------------------



SW-4, 03 DEC 2020 to 31 DEC 2020

SW-4, 03 DEC 2020 to 31 DEC 2020