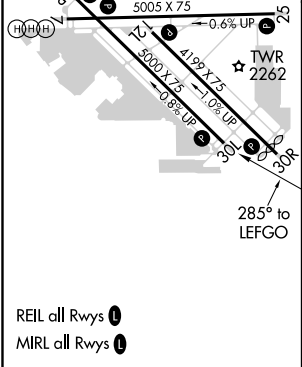
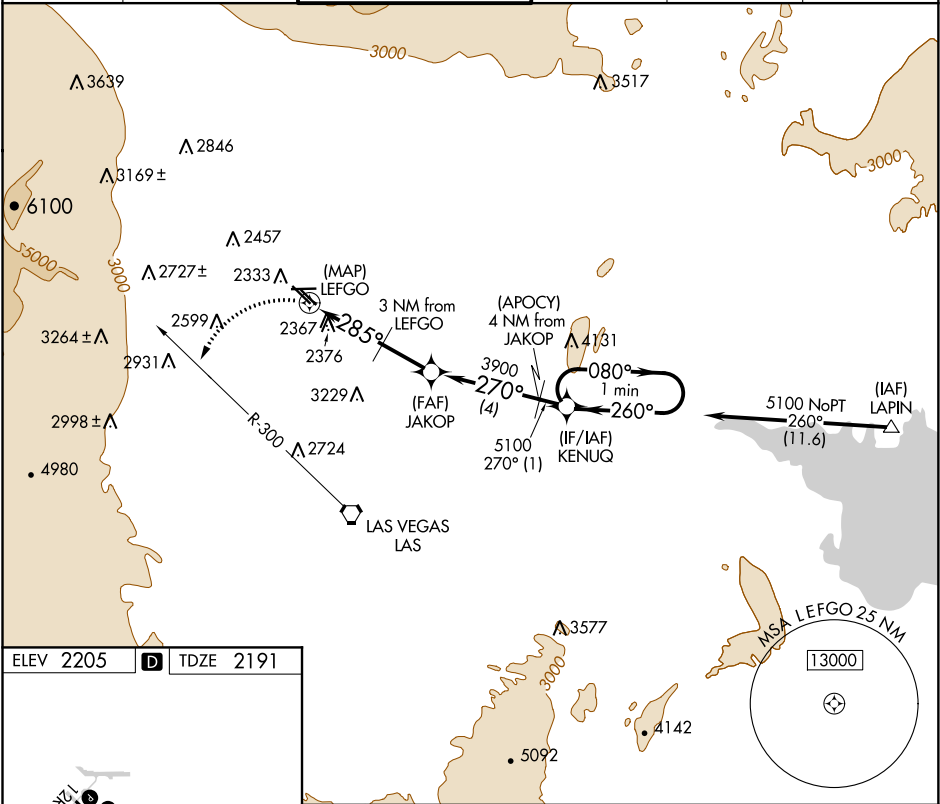


APP CRS	Rwy Idg	5000
285°	TDZE	2191
	Apt Elev	2205

GPS RWY 30L  
NORTH LAS VEGAS (VGT)

NA	When local altimeter setting not received, use McCarran Intl altimeter setting and increase all MDA 40 feet and S-30L Cats C/D visibility ¼ mile. Circling to Rwy 12L-30R NA.	MISSED APPROACH: Climbing left turn to 4000 via heading 220° and LAS R-300 to LAS VORTAC.
----	---	---

ATIS 118.05	LAS VEGAS APP CON 119.4 360.85	NORTH LAS VEGAS TOWER* 125.7 (CTAF) 360.75	GND CON 121.7	CLNC DEL 124.0	UNICOM 122.95
----------------	-----------------------------------	---	------------------	-------------------	------------------



	4000	LAS R-300	LAS	KENUQ	One Minute Holding Pattern
	hdg 220°			(APOCY) 4 NM from JAKOP	
		3 NM from LEFGO	JAKOP	270°	080°
		285°	3200	3900	5100
		270°	270°	260°	260°
		3 NM	2 NM	4 NM	1 NM
CATEGORY	A	B	C	D	
S-30L	2680-1	489 (500-1)	2680-1¼ 489 (500-1¼)	2680-1½ 489 (500-1½)	
CIRCLING	2720-1	515 (600-1)	2720-1½ 515 (600-1½)	2760-2 555 (600-2)	

SW-4, 03 DEC 2020 to 31 DEC 2020

SW-4, 03 DEC 2020 to 31 DEC 2020