

WAAS CH 53330 W14A	APP CRS 134°	Rwy Idg TDZE Apt Elev	8000 759 783
--	------------------------	-----------------------------	---

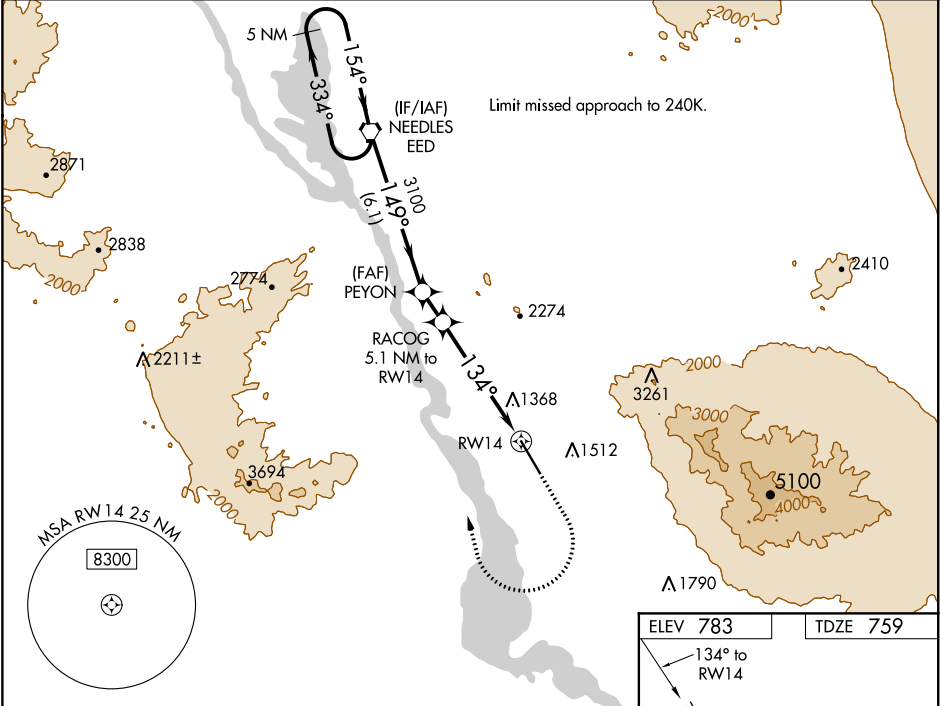
RNAV (GPS) RWY 14
LAKE HAVASU CITY (HII)

NA

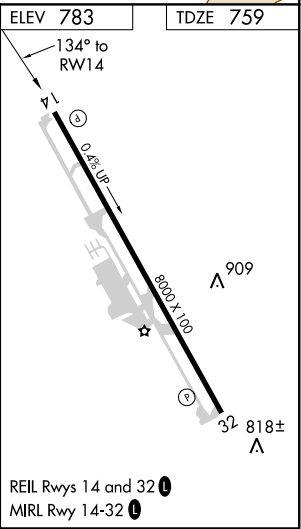
When local altimeter setting not received, use Needles altimeter setting and increase all MDA 80 feet. Circling NA northeast of Rwy 14-32. DME/DME RNP-0.3 NA. Helicopter visibility reduction below 1 SM NA. When VGSI inop, procedure NA at night.

MISSED APPROACH: Climb to 2600 then climbing right turn to 6000 direct EED VORTAC and hold, continue climb-in-hold to 6000.

AWOS-3 119.025	LOS ANGELES CENTER 134.65 314.2	UNICOM 122.7 (CTAF)
--------------------------	---	-------------------------------



VGSI and descent angles not coincident (VGSI Angle 3.50/TCH 58).				2600	6000	EED
5 NM Holding Pattern				↑	↪	⬡
5000 ← 334° 154° → 149° 3100 134° 2620 RW14				RACOG 5.1 NM to RW14		
← 6.1 NM → 1.3 NM → 5.1 NM →				TCH 40		
CATEGORY	A	B	C	D		
LP MDA	2140-1¼ 1381 (1400-1¼)	2140-1½ 1381 (1400-1½)	2140-3	1381 (1400-3)		
LNAV MDA	2320-1¼ 1561 (1600-1¼)	2320-1½ 1561 (1600-1½)	2320-3	1561 (1600-3)		
CIRCLING	2320-1¼ 1537 (1600-1¼)	2320-1½ 1537 (1600-1½)	2320-3	1537 (1600-3)		



SW-4, 03 DEC 2020 to 31 DEC 2020

SW-4, 03 DEC 2020 to 31 DEC 2020