

WAAS CH 49110 W32A	APP CRS 317°	Rwy Idg TDZE 783 Apt Elev 783
--	------------------------	---

RNAV (GPS) RWY 32

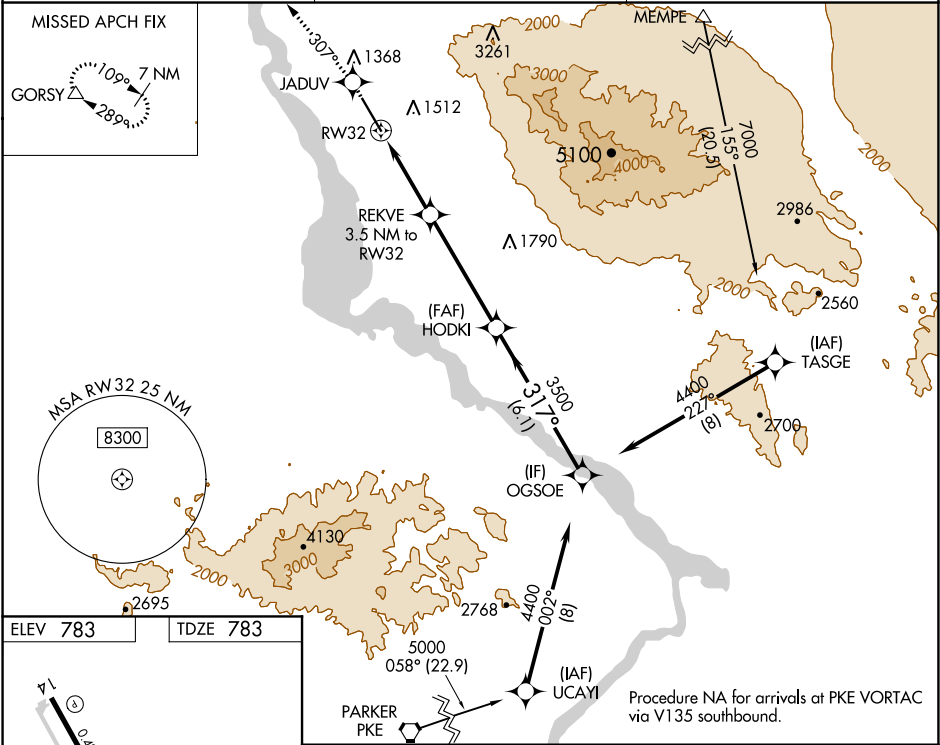
LAKE HAVASU CITY (HII)

NA

DME/DME RNP-0.3 NA. Visibility reduction by helicopters NA. When local altimeter setting not received, use Needles altimeter setting and increase all DA/MDA 80 feet and all visibilities ½ mile. VDP NA when using Needles altimeter setting. Circling NA northeast of Rwy 14-32.

MISSED APPROACH: Climb to 6300 direct JADUV and via 307° track to GORSY and hold, continue climb-in-hold to 6300.

AWOS-3 119.025	LOS ANGELES CENTER 134.65 314.2	UNICOM 122.7 (CTAF)
--------------------------	---	-------------------------------



6300	JADUV	GORSY	VGSI and RNAV glidepath not coincident (VGSI Angle 3.00/TCH 36).			
		307° tr				
*LNAV only.			REKVE 3.5 NM to RW32	HODKI	OGSOE	
			*2.6 NM to RW32			4400
			1940*			Procedure Turn NA
			2.6 NM	0.9	4.7 NM	GP 3.00°
					6.1 NM	TCH 50
CATEGORY	A	B	C	D		
LPV DA	1265-1¾ 482 (500-1¾)					
LNAV MDA	1660-1 877 (900-1)	1660-1¼ 877 (900-1½)	1660-2½ 877 (900-2½)	1660-2¾ 877 (900-2¾)		
CIRCLING	1660-1 877 (900-1)	1660-1¼ 877 (900-1½)	1660-2½ 877 (900-2½)	1660-2¾ 877 (900-2¾)		