

NDB AZC

403

APP CRS

330°

Rwy Idg  
TDZE  
Apt Elev

N/A  
N/A  
4874

NDB-A

COLORADO CITY MUNI (AZC)

NA

Circling NA for Cat D north of Rwy 11-29.

MISSED APPROACH: Climbing left turn to 7400 on heading 150° then climbing left turn to 8800 direct AZC NDB and hold, continue climb-in-hold to 8800.

AWOS-3PT

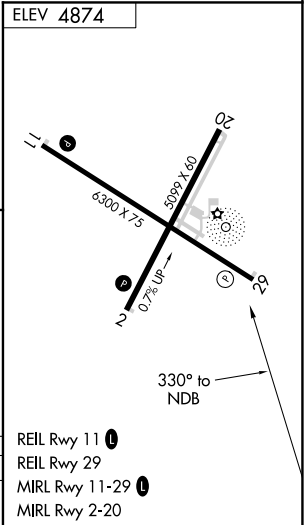
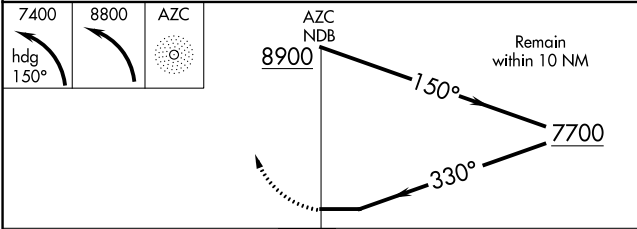
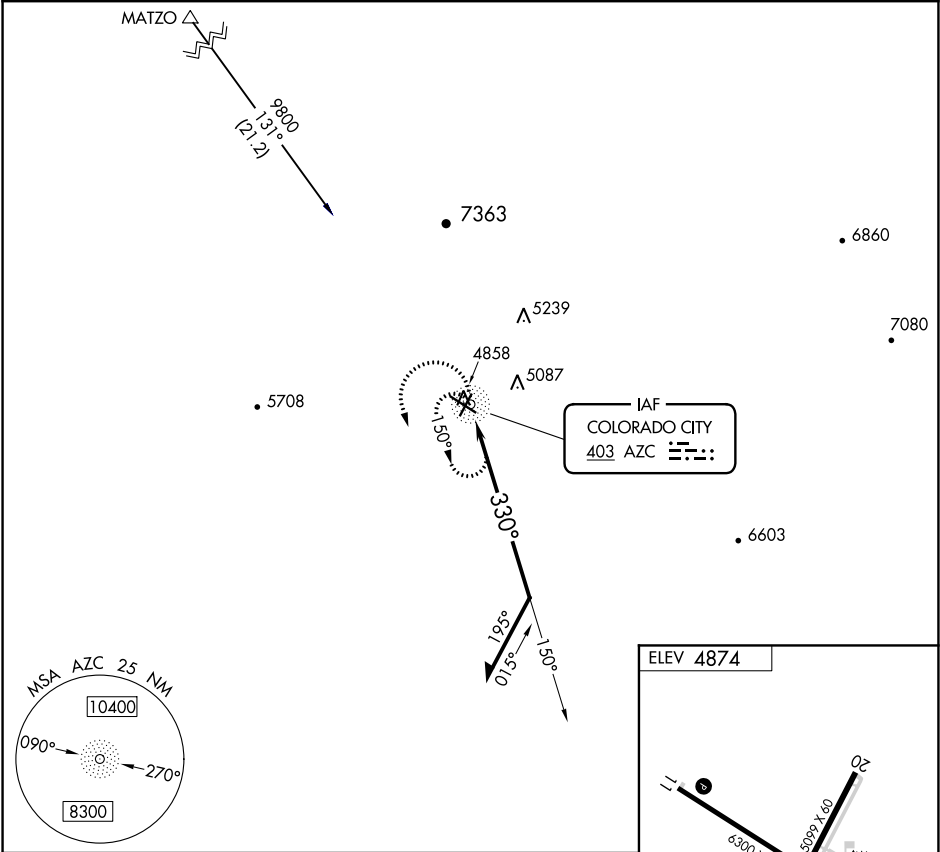
118.375

LOS ANGELES CENTER

124.2 343.6

UNICOM

122.7 (CTAF)



CATEGORY	A	B	C	D
CIRCLING	6980-1¼ 2106 (2200-1¼)	6980-1½ 2106 (2200-1½)	6980-3	2106 (2200-3)

REIL Rwy 11

REIL Rwy 29

MIRL Rwy 11-29

MIRL Rwy 2-20