

WAAS
CH 72740
W29A

APP CRS
290°

Rwy Idg
TDZE
Apt Elev

6300
4855
4874

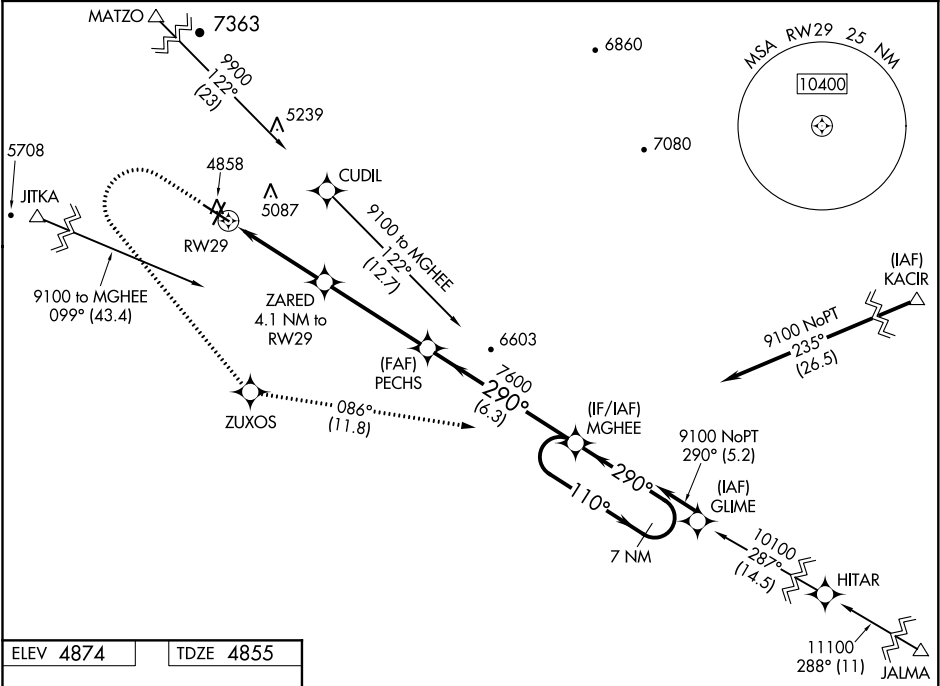
RNAV (GPS) RWY 29

COLORADO CITY MUNI (AZC)

RNP APCH.

MISSED APPROACH: Climb to 6600 then climbing left turn to 9100 direct ZUXOS and track 086° to MGHEE and hold.

AWOS-3PT 118.375	LOS ANGELES CENTER 124.2 343.6	UNICOM 122.7 (CTAF) 1
---------------------	-----------------------------------	--------------------------



ELEV 4874	TDZE 4855
-----------	-----------

REIL Rwy 11 1

REIL Rwy 29

MIRL Rwy 11-29 1

MIRL Rwy 2-20

6600

9100

ZUXOS

tr 086°

MGHEE

* LNAV only

ZARED 4.1 NM to RWY29

PECHS 7600

MGHEE 7600

110°

290°

9100

GP 3.00°

TCH 40

1.9 NM

2.2 NM

4.4 NM

6.3 NM

CATEGORY	A	B	C	D
LPV DA	5105-1 250 (300-1)			
LNAV/VNAV DA	5157-1 302 (300-1)			
LNAV MDA	5500-1 645 (700-1)	5500-1 645 (700-1)		
CIRCLING	5500-1 626 (700-1)	5520-1 646 (700-1)	6880-3	2006 (2100-3)