

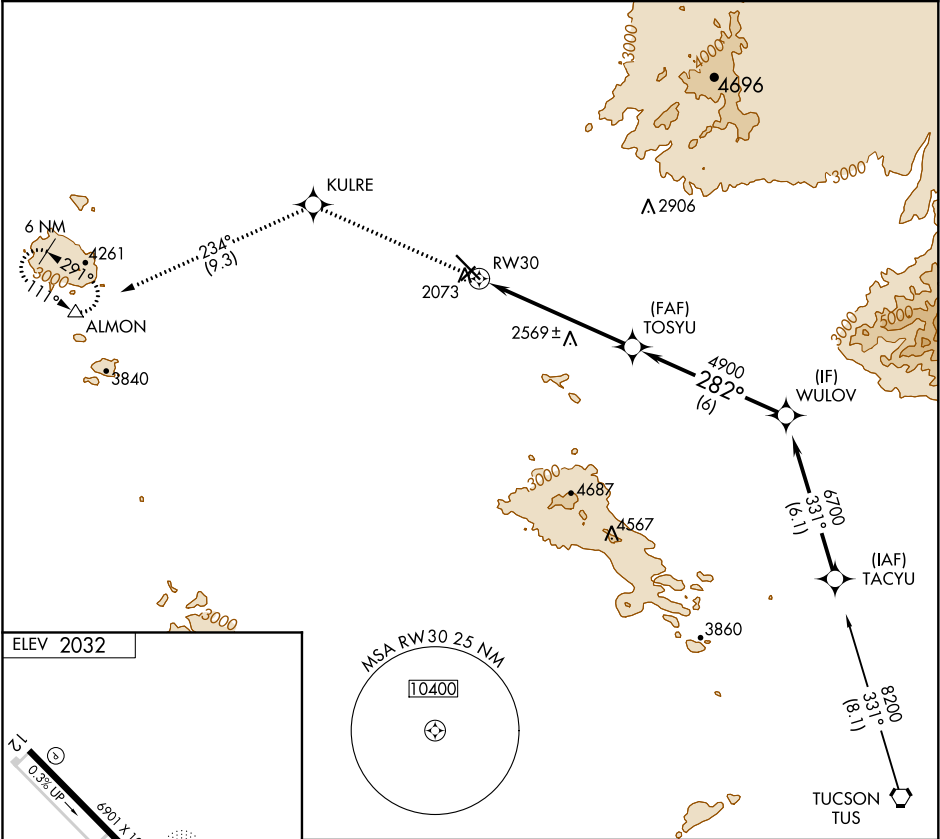
APP CRS	Rwy Idg	N/A
282°	TDZE	N/A
	Apt Elev	2032

RNAV (GPS)-E  
MARANA RGNL (AVQ)

**⚠** When local altimeter setting not received, use Ryan Field altimeter setting and increase all MDAs 100 feet and increase Circling Cat A visibility ¼ SM and Cat C ½ SM. DME/DME RNP-0.3 NA.

**⚠** MISSED APPROACH: Climb to 6000 direct KULRE and 234° track to ALMON and hold, continue climb-in-hold to 6000.

AWOS-3 118.375	TUCSON APP CON 119.4 318.1	UNICOM 123.0 (CTAF) <b>0</b>
-------------------	-------------------------------	---------------------------------



ELEV 2032

REIL Rwys 12 and 30 **0**  
MIRL Rwys 3-21 and 12-30 **0**

6000	KULRE	234° tr	ALMON	TOSYU	WULOV
				4900	6700
					Procedure Turn NA
CATEGORY	A	B	C	D	
<b>C</b> CIRCLING	2820-1 788 (800-1)	2820-1¼ 788 (800-1¼)	2820-2¼ 788 (800-2¼)	NA	

SW-4, 03 DEC 2020 to 31 DEC 2020

SW-4, 03 DEC 2020 to 31 DEC 2020