

APP CRS
084°

Rwy Idg
TDZE
Apt Elev
N/A
N/A
4530

SPANISH FORK ARPT SPRINGVILLE-WOODHOUSE FIELD (SPK)

RNAV (GPS)-A

RNP APCH.

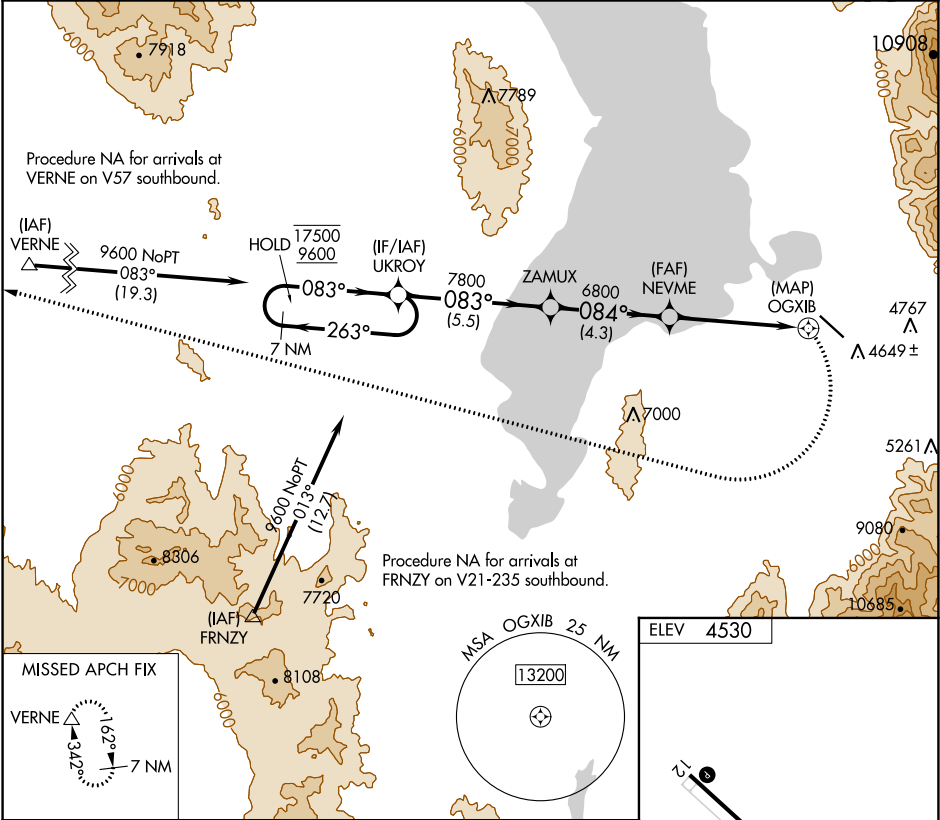
NA

-21°C

Use Provo altimeter setting. When not received use Nephi altimeter setting: increase all MDAs 120 feet.

MISSED APPROACH: (Do not exceed 185K until turn completion) Climbing right turn to 11500 direct VERNE and hold.

AWOS-2 119.275	PVU AWOS-3PT 135.175	SALT LAKE CITY APP CON 118.85 233.7	CTAF 122.90
--------------------------	--------------------------------	---	-----------------------



7 NM Holding Pattern

UKROY ZAMUX NEVME OGXIB

17500 9600 263° 083° 083° 084° 6800

11500 VERNE

5.5 NM 4.3 NM 5 NM

CATEGORY	A	B	C	D
CIRCLING	6360-1¼ 1830 (1900-1¼)	6360-1½ 1830 (1900-1½)	6360-3 1830 (1900-3)	NA

MIRL Rwy 12-30
REIL Rwy 12 and 30