

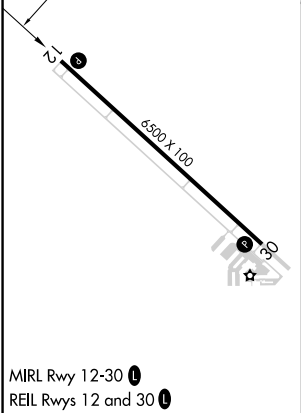
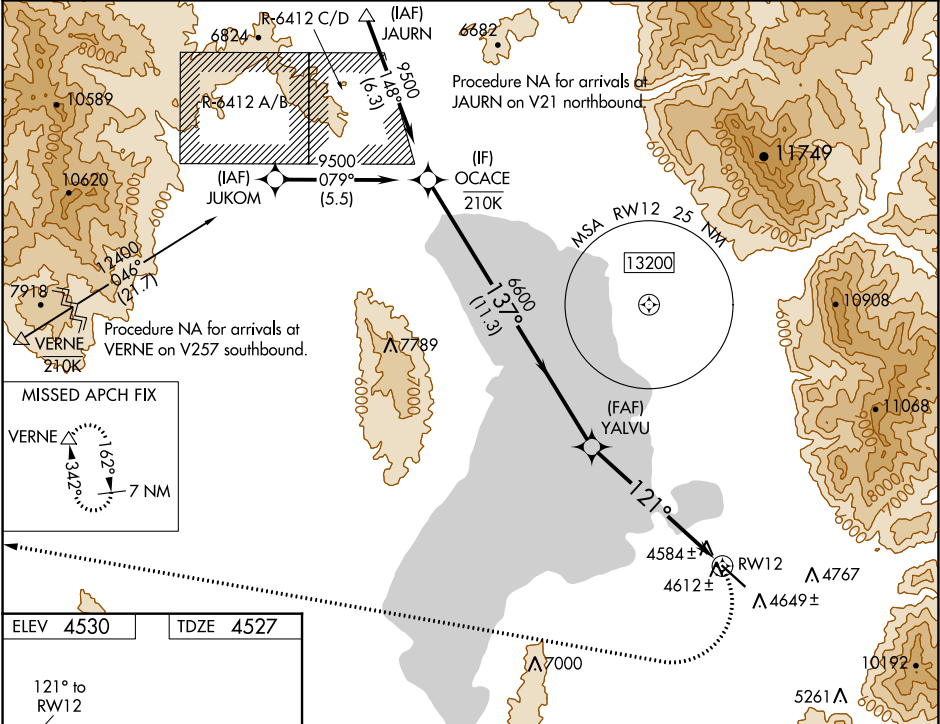
WAAS CH 78042 W12A	APP CRS 121°	Rwy Idg TDZE 4527 Apt Elev 4530
----------------------------------------	------------------------	-----------------------------------------------------

RNAV (GPS) Y RWY 12

SPANISH FORK ARPT SPRINGVILLE-WOODHOUSE FIELD (SPK)

RNP APCH.	MISSED APPROACH: (Do not exceed 185K until turn completion) Climbing right turn to 11500 direct VERNE and hold.
NA -21°C	Rwy 12 helicopter visibility reduction below ¾ SM NA. Use Provo altimeter setting; when not received use Nephi altimeter setting: increase all MDAs 120 feet.

AWOS-2 119.275	PVU AWOS-3PT 135.175	SALT LAKE CITY APP CON 118.85 233.7	CTAF 122.9
--------------------------	--------------------------------	-----------------------------------------------	----------------------



OCACE				Visual Segment - Obstacles.		11500	VERNE
9500				137°	6600	121°	RWY 12
YALVU				11.3 NM	6.3 NM		
CATEGORY	A	B	C	D			
LP MDA	6040-1¼ 1513 (1600-1¼)	6040-1½ 1513 (1600-1½)	6040-3	1513 (1600-3)			
LNAV MDA	6140-1¼ 1613 (1700-1¼)	6140-1½ 1613 (1700-1½)	6140-3	1613 (1700-3)			
CIRCLING	6180-1¼ 1650 (1700-1¼)	6180-1½ 1650 (1700-1½)	6180-3	1650 (1700-3)	NA		