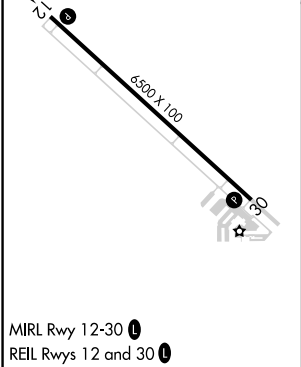
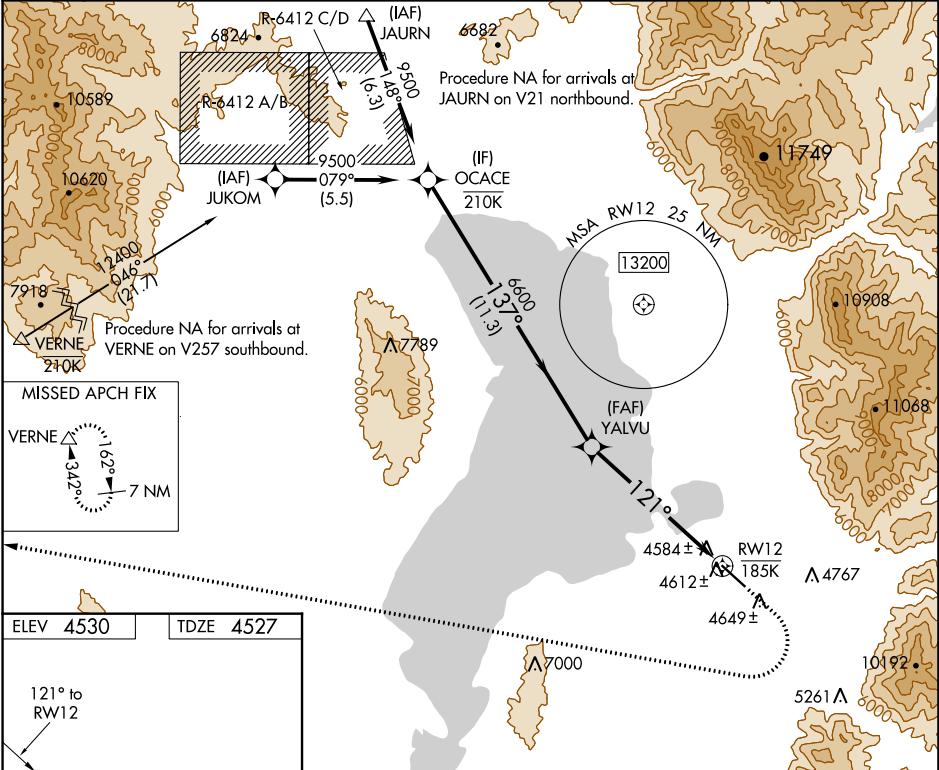


WAAS CH 82342 W12B	APP CRS 121°	Rwy Idg TDZE 4527 Apt Elev 4530
--	------------------------	---

RNAV (GPS) Z RWY 12
SPANISH FORK ARPT SPRINGVILLE-WOODHOUSE FIELD (SPK)

RNP APCH. ▼ ▲ NA ❄ -21°C	Use Provo altimeter setting; when not received use Nephi altimeter setting: increase all MDAs 120 feet. Rwy 12 helicopter visibility reduction below ¾ SM NA.	MISSED APPROACH: (Do not exceed 185K until turn completion) Climb to 5000, then climbing right turn to 11500 direct VERNE and hold. *Missed approach requires minimum climb of 380 feet per NM to 7700; if unable to meet climb gradient, see RNAV (GPS) Y RWY 12.
-----------------------------------	---	---

AWOS-2 119.275	PVU AWOS-3PT 135.175	SALT LAKE CITY APP CON 118.85 233.7	CTAF 122.90
--------------------------	--------------------------------	---	-----------------------



OCACE		Visual Segment - Obstacles.		5000	11500	VERNE
9500		YALVU		↑	↗	△
137°		6600		RWY12		
11.3 NM		6.3 NM				
CATEGORY	A	B	C	D		
LP MDA	4880-1 353 (400-1)					
LNAV MDA*	4900-1 373 (400-1)					