

(GSTVS1.SSR) 18032

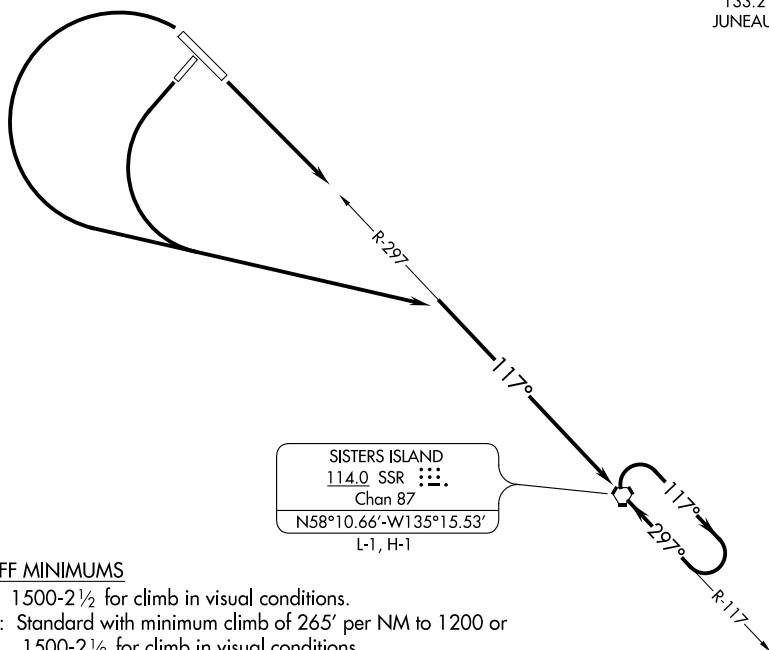
GUSTAVUS ONE DEPARTURE (OBSTACLE)

AL-1192 (FAA)

GUSTAVUS (GST)(PAGS)

GUSTAVUS, ALASKA

ANCHORAGE CENTER
133.2 360.65
JUNEAU RADIO
122.65



TAKEOFF MINIMUMS

- Rwy 2: 1500-2½ for climb in visual conditions.
Rwy 11: Standard with minimum climb of 265' per NM to 1200 or 1500-2½ for climb in visual conditions.
Rwy 20: Standard with minimum climb of 323' per NM to 1200 or 1500-2½ for climb in visual conditions.
Rwy 29: Standard.

TAKEOFF OBSTACLE NOTES

- Rwy 11: Trees beginning 1009' from DER, 151' left and right of centerline, up to 140' AGL/147' MSL.
Bush 140' from DER, 472' right of centerline, 24' AGL/34' MSL.

NOTE: Chart not to scale.

DEPARTURE ROUTE DESCRIPTION

TAKEOFF RUNWAY 2: Climb in visual conditions to cross Gustavus Airport at or above 1500, continue climb to at or above 3000 via SSR VORTAC R-297 to SSR VORTAC. When executing VCOA, notify ATC prior to departure.

TAKEOFF RUNWAY 11: Climbing right turn to at or above 3000 to intercept SSR VORTAC R-297 to SSR VORTAC or climb in visual conditions to cross Gustavus Airport at or above 1500 then climb to at or above 3000 via SSR R-297 to SSR VORTAC. When executing VCOA, notify ATC prior to departure.

TAKEOFF RUNWAY 20: Climbing left turn to at or above 3000 to intercept SSR VORTAC R-297 to SSR VORTAC or climb in visual conditions to cross Gustavus Airport at or above 1500 then climb to at or above 3000 via R-297 to SSR VORTAC. When executing VCOA, notify ATC prior to departure.

TAKEOFF RUNWAY 29: Climbing left turn to at or above 3000 to intercept SSR VORTAC R-297 to SSR VORTAC.

GUSTAVUS ONE DEPARTURE (OBSTACLE)

(GSTVS1.SSR) 27JUN13

GUSTAVUS, ALASKA
GUSTAVUS (GST)(PAGS)

AK, 31 DEC 2020 to 25 FEB 2021