
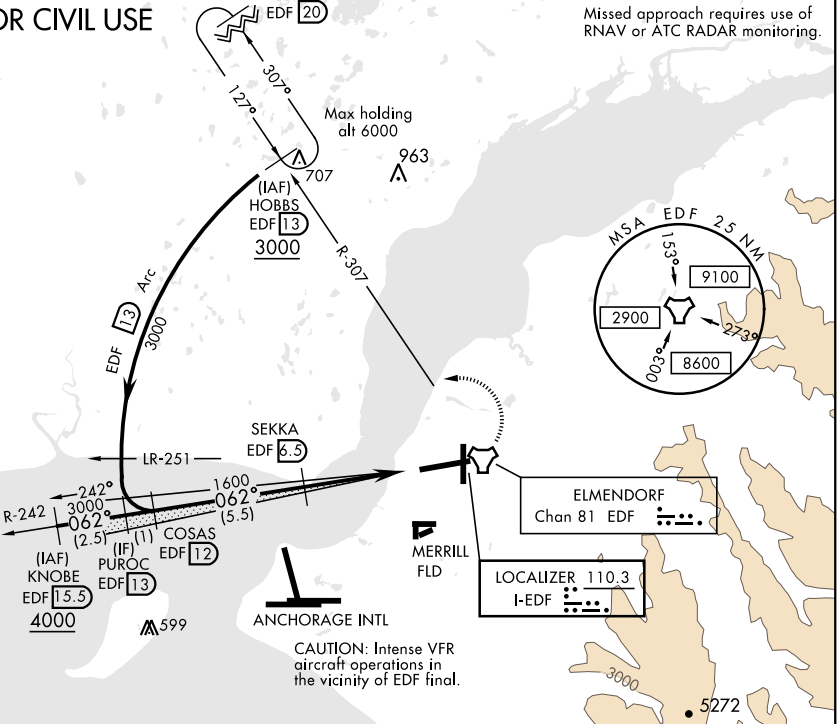


ILS Y RWY 6 (SA CAT I)

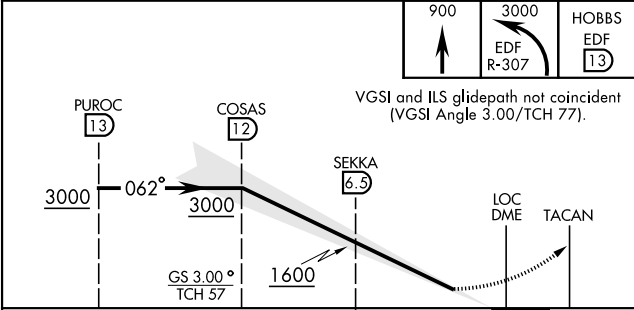
LOC I-EDF 110.3	APCH CRS 062°	Rwy ldg 10,000 TDZE 175 Arpt Elev 213	AL-1196 [USAF]	ELMENDORF AFB (PAED)		
Requires MAJCOM flying authority approval and use of HUD to DA. Procedure NA when Tower is closed.			ALSIF-1 	MISSED APPROACH: Climb to 900, then climbing left turn to 3000 via EDF R-307 to HOBBS and hold.		
ATIS ★ 124.3 273.5	ANCHORAGE APP CON 118.6 290.5 North 123.8 259.3 South		TOWER 127.2 352.05	GND CON 121.8 275.8	CLNC DEL 128.8 306.925	PAR

NOT FOR CIVIL USE

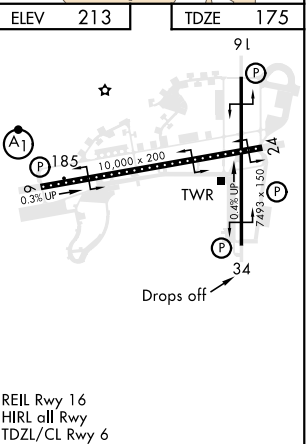
Misled approach requires use of RNAV or ATC RADAR monitoring.



EMERG SAFE ALT 100 NM 15,300



CATEGORY	A	B	C	D
S-ILS 6	RA 138/14	150	DA 325	



ILS Y RWY 6 (SA CAT I)

AK, 31 DEC 2020 to 25 FEB 2021

AK, 31 DEC 2020 to 25 FEB 2021