

TACAN RWY 6

TACAN	EDF	APCH CRS	Rwy Idg	10,000
Chan	81	062°	TDZE	174
			Arpt Elev	213

AL-1196 [USAF]

ELMENDORF AFB (PAED)

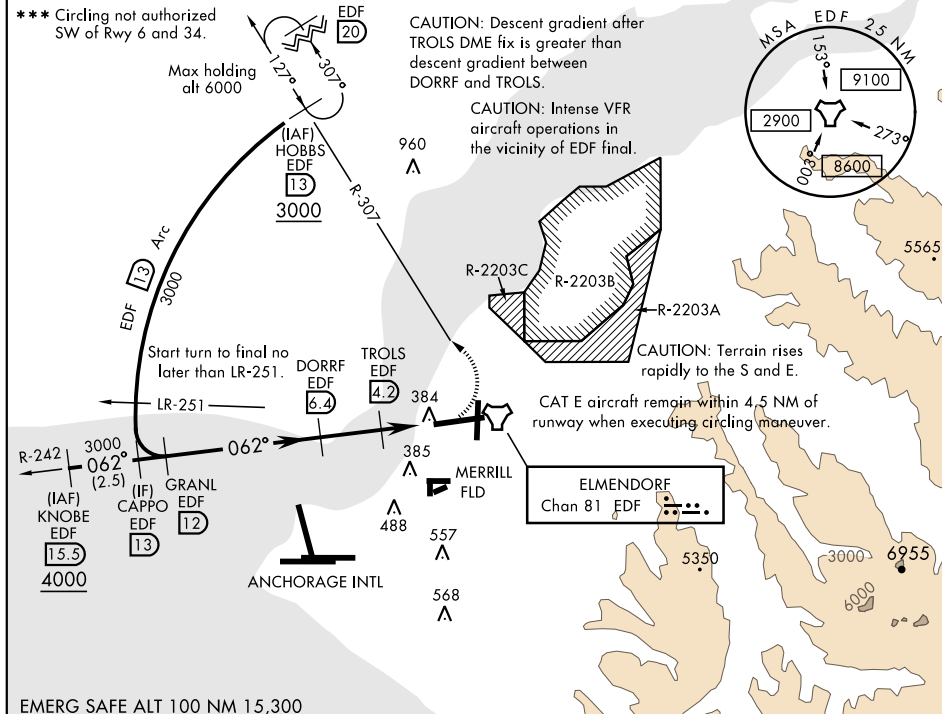
**T** \* When ALS inop, increase CAT AB RVR to 55, vis to 1 mile, CAT CDE vis to 1 3/8 miles.  
\*\* Circling not authorized S of Rwy 6-24.



**MISSED APPROACH:** Climbing left turn to 3000 via EDF R-307 to HOBBS and hold. Continue climb in hold to 3000.

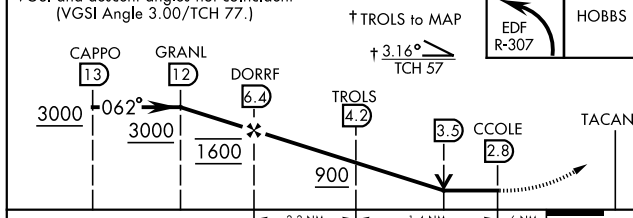
ATIS ★ 124.3 273.5	ANCHORAGE APP CON 118.6 290.5 North 123.8 259.3 South	ELMENDORF TOWER 127.2 352.05	GND CON 121.8 275.8	CLNC DEL 128.8 306.925	PAR
-----------------------	---	---------------------------------	------------------------	---------------------------	-----

\*\*\* Circling not authorized  
SW of Rwy 6 and 34.

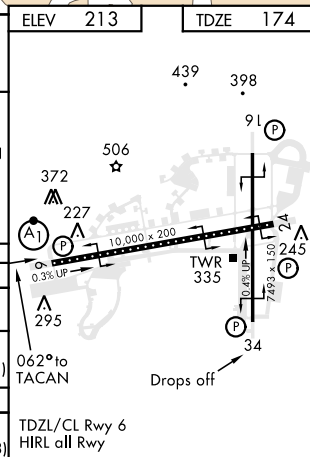


EMERG SAFE ALT 100 NM 15,300

VGSI and descent angles not coincident  
(VGSI Angle 3.00/TCH 77.)



CATEGORY	A	B	C	D	E
S-6 *	640/24	466 (500-½)	640/50	466	(500-1)
CIRCLING **	800-1	587 (600-1)	800-1½ 587 (600-1½)	820-2 607 (700-2)	940-2½ 727 (800-2½)
RWY 34 CIRCLING MINIMUMS					
CIRCLING ***	800-1	587 (600-1)	920-2 707 (800-2)	1020-2½ 807 (900-2½)	1480-3 1267 (1300-3)



61°15'N-149°48'W

ELMENDORF AFB (PAED)

Amdt 2 05NOV20

## TACAN RWY 6

AK, 31 DEC 2020 to 25 FEB 2021

AK, 31 DEC 2020 to 25 FEB 2021