

TACAN Y RWY 16

TACAN	EDF	APCH CRS	Rwy Idg	7493
Chan	81	133°	TDZE	213
			Arpt Elev	213

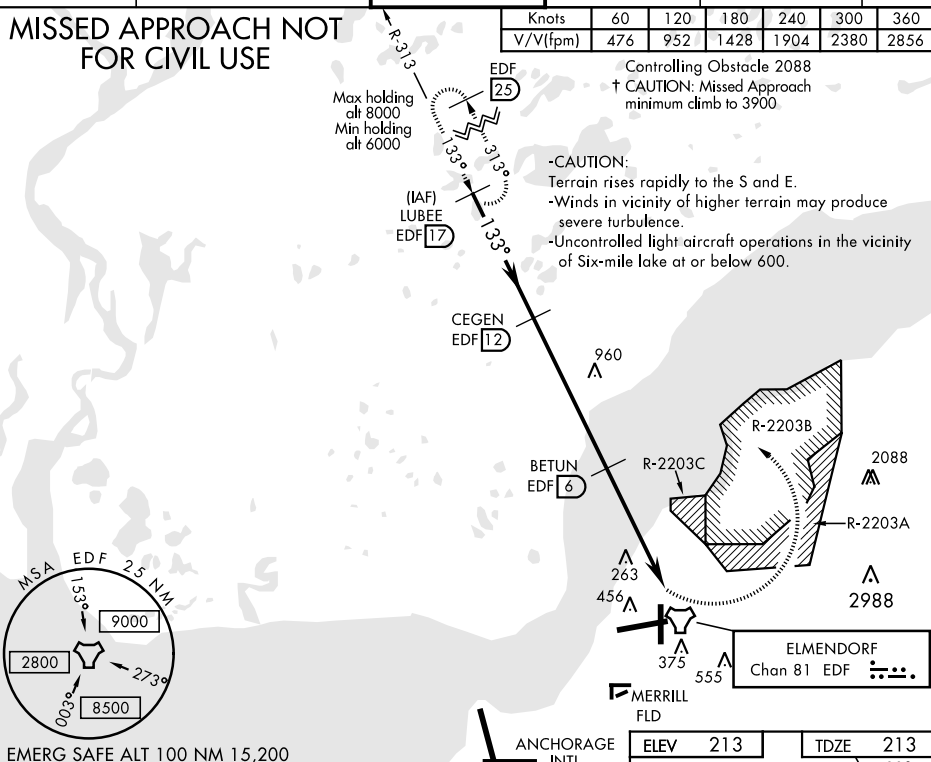
AL-1196 [USAF]

ELMENDORF AFB (PAED)

<p>✚ Circling not authorized SW of Rwy 6 and 34. CAT E aircraft remain within 4.5 NM of runway when executing circling maneuver.</p>	<p>✚ MISSED APPROACH: Climbing left turn to 6000 via EDF R-313 to LUBEE and hold. Continue climb-in-hold to 6000.</p>
--	---

<p>ATIS ★ 124.3 273.5</p>	<p>ANCHORAGE APP CON North 118.6 290.5 South 123.8 259.3</p>	<p>ELMENDORF TOWER 127.2 352.05</p>	<p>GND CON 121.8 275.8</p>	<p>CLNC DEL 128.8 306.925</p>	<p>PAR</p>
-------------------------------	--	---	--------------------------------	-----------------------------------	------------

MISSED APPROACH NOT FOR CIVIL USE



EMERG SAFE ALT 100 NM 15,200

<p>VGSI and descent angles not coincident (VGSI angle 3.00/TCH 47).</p>					<p>ELEV 213</p>	<p>TDZE 213</p>
<p>LUBEE R-313 (EDF 17) 6000 CEGEN (EDF 12) 3900 BETUN (EDF 6) 2000 ALNOK (EDF 1.8) TACAN</p>					<p>133° to TACAN</p>	
<p>3.08° TCH 56</p>					<p>0.3% UP 10,000 x 200 0.6% DOWN 7,245 x 135 Drops off</p>	
CATEGORY	A	B	C	D	E	
S-16 †	NOT AUTHORIZED				680-138 467 (500-138)	
CIRCLING *	NOT AUTHORIZED				1420-3 1207 (1300-3)	

TDZL/CL Rwy 6
HIRL all Rwy

TACAN Y RWY 16