

ILS or LOC/DME RWY 10

LOC/DME I-BIG 111.1 Chgn 48	APCH CRS 102°	Rwy Idg 6115 TDZE 1253 Arpt Elev 1285
---	-------------------------	--

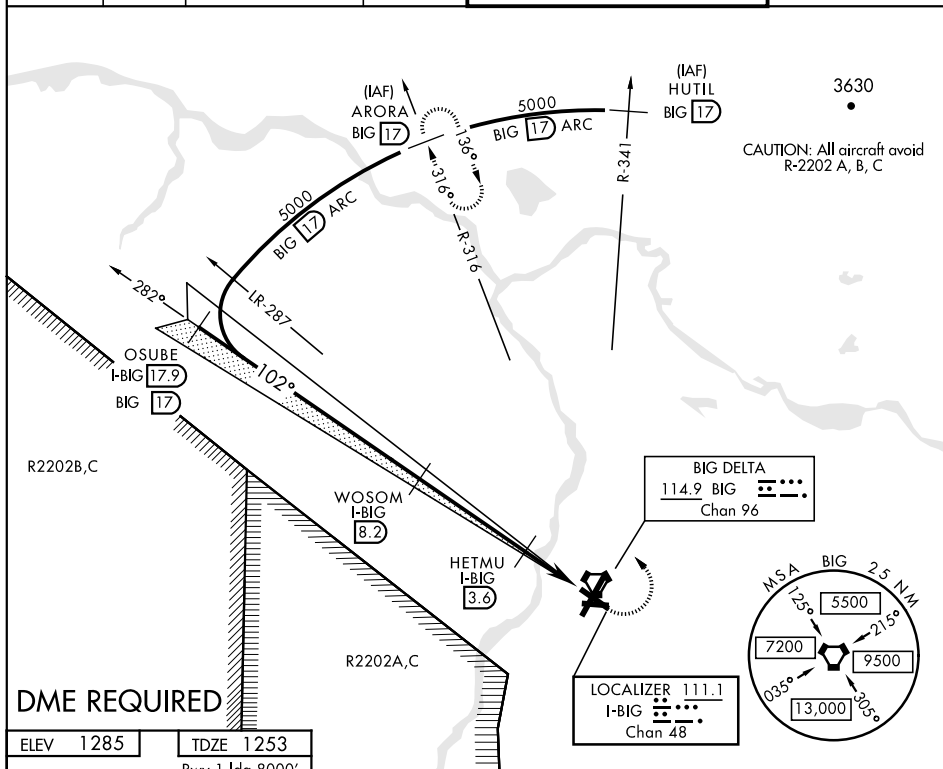
AL-1218 [USA]

ALLEN AAF (PABI)

T * Circling not authorized East of Rwy 1-19.

MISSED APPROACH: Climb to 2200 then climbing left turn to 5000 via BIG R-316 to ARORA/BIG 17 DME and hold.

ATIS 132.075	ASOS 135.65	ANCHORAGE CENTER 135.3 322.5	CTAF 122.9 0	ALLEN TOWER ★ 119.8 235.775 40.8 (E) FM	GND CON 118.225 251.05
-----------------	----------------	---------------------------------	-----------------	--	---------------------------



ELEV 1285

TDZE 1253

Rwy 1 ldg 8000'

Rwy 19 ldg 8000'

102° 7.1 NM from WOSOM

P

1294

070°

4060 x 90

ASSAULT STRIP

TWR 1343

1325 ☆

250°

28°

HIRL Rwy 1-19 and 10-28 L

MIRL Rwy 070° -250° L

REIL Rwy 10-28

Diagram illustrating the layout of a VORTAC station. The VOR (VOR-1) is labeled OSUBE I-BIG 17.9 and WOSOM I-BIG 8.2. The ILS (ILS-1) is labeled HETMU I-BIG 3.6 and I-BIG 1.1. The diagram shows the intersection of the VOR and ILS, with the ILS glideslope and VGS not coincident. The diagram also shows the 'Procedure Turn NA' and 'Use I-BIG DME when on localizer course.'

CATEGORY	A	B	C	D
S-ILS 10	1453-¾	200	(200-¾)	
S-LOC 10	1560-1	307	(300-1)	
CIRCLING *	1720-1 435 (500-1)	1760-1 475 (500-1)	1760-1½ 475 (500-1½)	1860-2 575 (600-2)

DELTA JUNCTION/FORT GREELY, ALASKA

64°00'N-145°43'W

ALLEN AAF (PABI)

ILS or LOC/DME RWY 10

Orig D 05DEC19

AK, 31 DEC 2020 to 25 FEB 2021