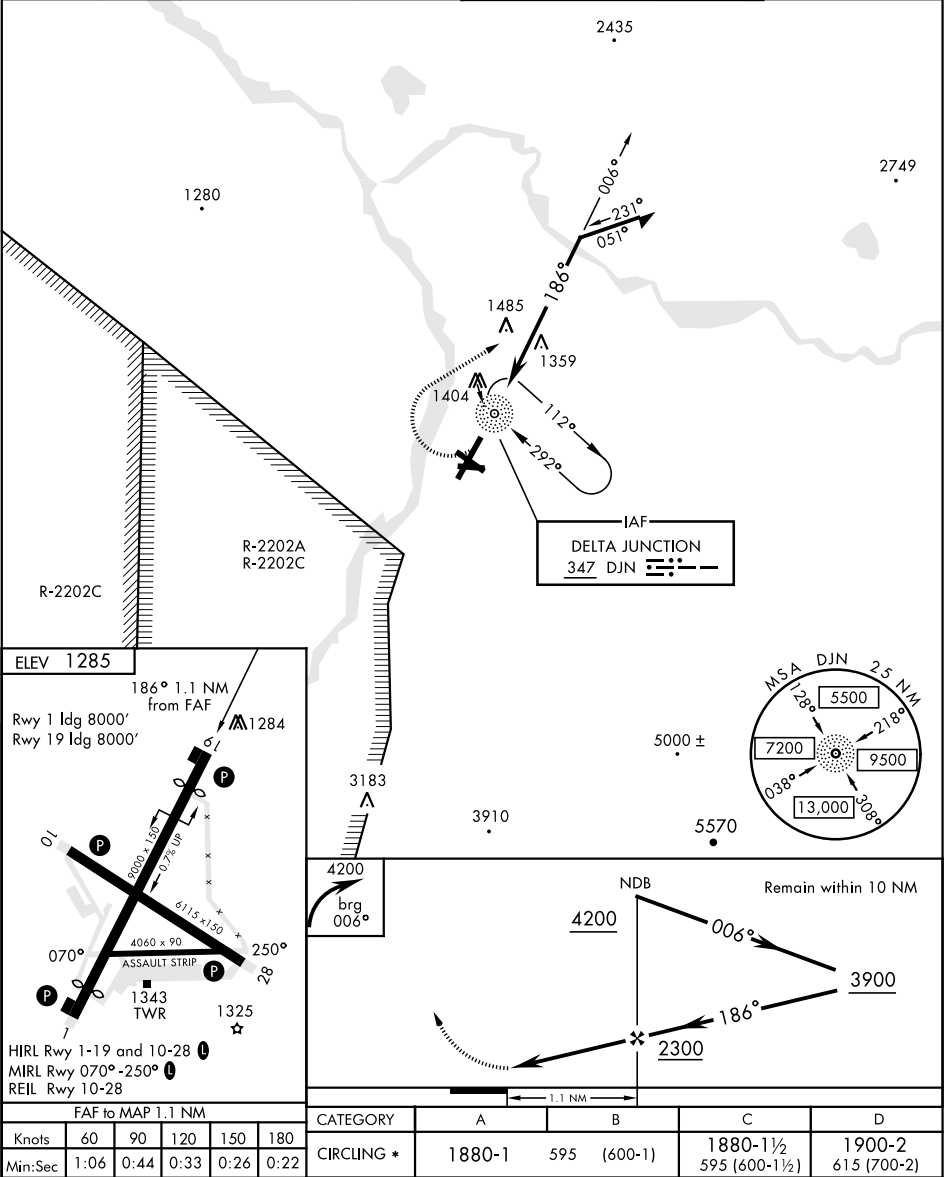


NDB DJN <b>347</b>	APCH CRS <b>186°</b>	Rwy Idg TDZE Arprt Elev <b>N/A</b> <b>N/A</b> <b>1285</b>	AL-1218 [USA]			ALLEN AAF (PABI)		
<b>V</b> * Circling not authorized East of Rwy 1-19.			MISSED APPROACH: Climbing right turn to 4200 via 006° bearing from DJN NDB, then right turn direct DJN NDB and hold.					
ATIS <b>132.075</b>	ASOS <b>135.65</b>	ANCHORAGE CENTER <b>135.3 322.5</b>	CTAF <b>122.9</b>	<b>119.8 235.775 40.8 (E) FM</b>			GND CON <b>118.225 251.05</b>	



AK, 31 DEC 2020 to 25 FEB 2021

AK, 31 DEC 2020 to 25 FEB 2021