

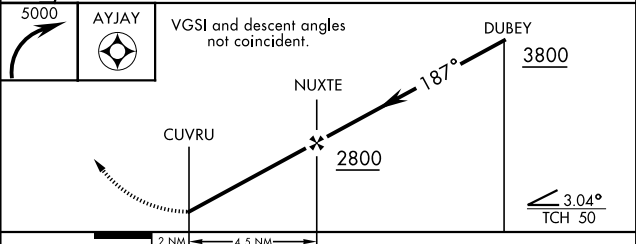
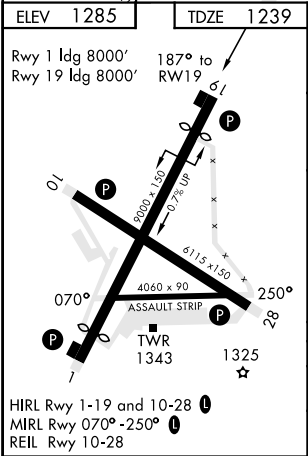
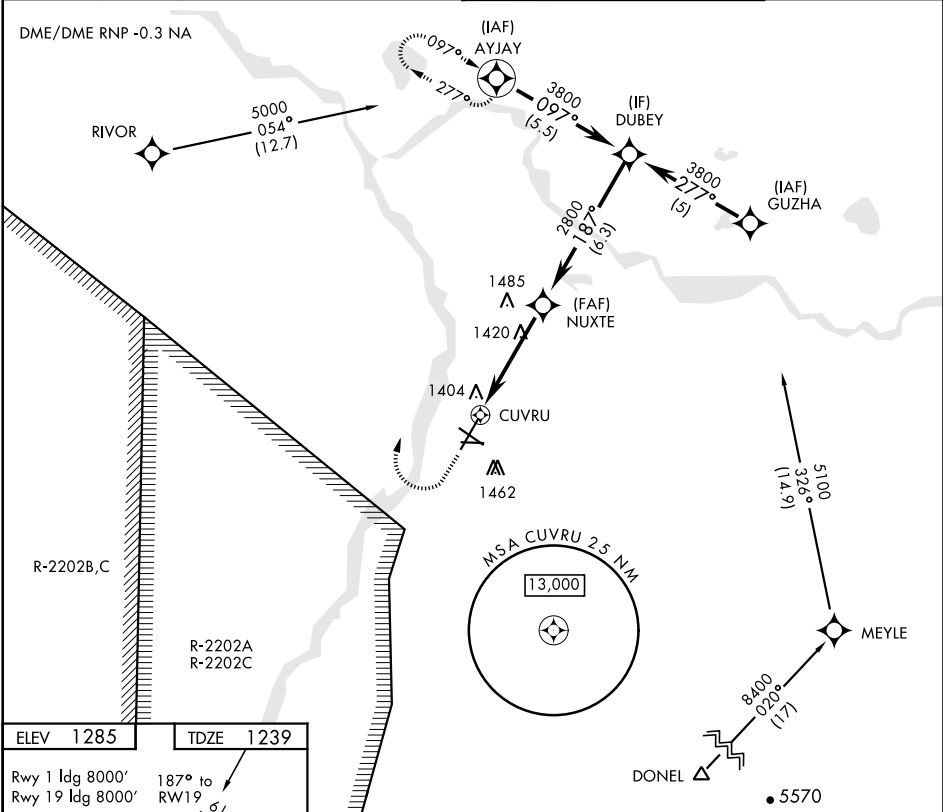
RNAV (GPS) RWY 19

APCH CRS	Rwy ldg	8000
187°	TDZE	1239
	Arpt Elev	1285

AL-1218 [USA]

ALLEN AAF (PABI)

* Circling not authorized East of Rwy 1-19.				MISSED APPROACH: Climbing right turn to 5000, direct AYJAY and hold.			
ATIS	ASOS	ANCHORAGE CENTER	CTAF	ALLEN TOWER ★			GND CON
132.075	135.65	135.3 322.5	122.9 0	119.8 235.775 40.8 (E) FM			118.225 251.05



CATEGORY	A	B	C	D
LNVA MDA	1720-1 481 (500-1)	1720-1 481 (500-1)	1720-1 481 (500-1)	1720-1 481 (500-1)
CIRCLING *	1720-1 435 (500-1)	1760-1 475 (500-1)	1760-1 475 (500-1)	1860-2 575 (600-2)

RNAV (GPS) RWY 19

AK, 31 DEC 2020 to 25 FEB 2021

AK, 31 DEC 2020 to 25 FEB 2021