

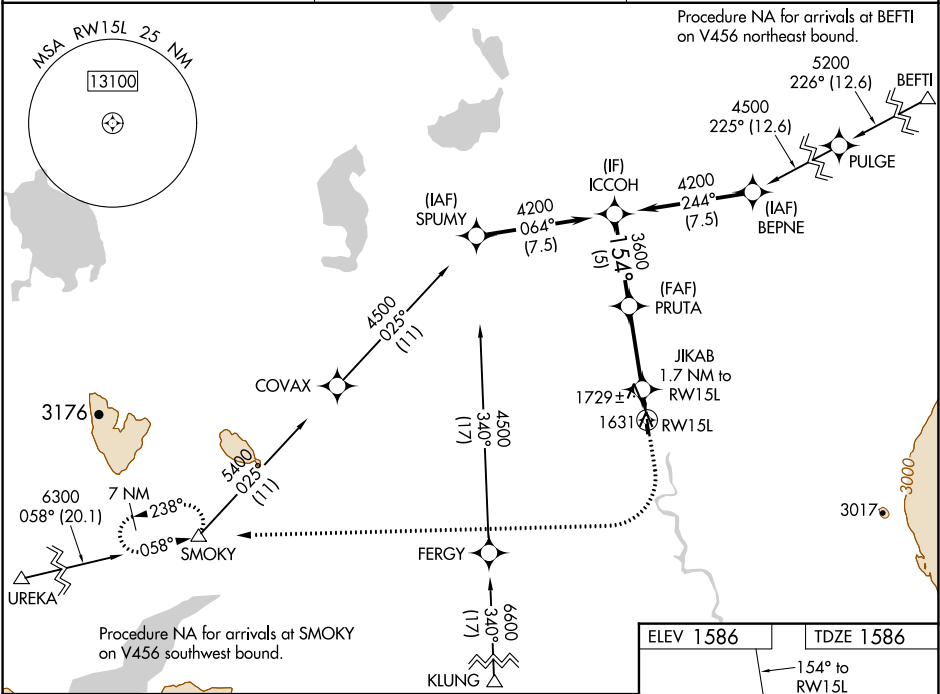
WAAS CH 82543 W15A	APP CRS 154°	Rwy Idg TDZE 1586 Apt Elev 1586
--	------------------------	---

RNAV (GPS) RWY 15L

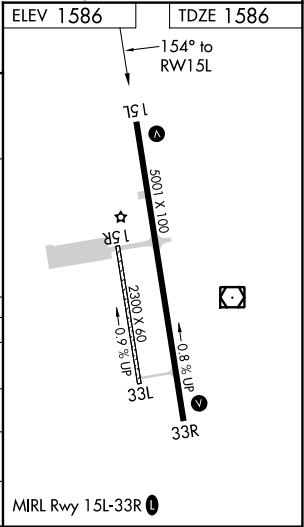
GULKANA (GKN) (PAGK)

RNP APCH. ▼ -37°C	Circling Rwy 15R, 33L NA at night. Rwy 15L helicopter visibility reduction below ¾ SM NA. For uncompensated Baro-VNAV systems, LNAV/VNAV NA below -21°C or above 54°C.	MISSED APPROACH: Climb to 2100 then climbing right turn to 7000 direct SMOKY and hold, continue climb-in-hold to 7000.
-------------------------	--	--

ASOS 134.85	ANCHORAGE CENTER 119.5 317.5	CTAF 122.9 0
-----------------------	--	------------------------



<div>ICCOH</div> <div>4200</div> <div>GP 3.00°</div> <div>TCH 49</div>				<div>PRUTA</div> <div>3600</div>				<div>2100</div> <div>7000</div> <div>SMOKY</div> <div>*LNAV only</div>			
154°				3600				*2160			
5 NM				4.5 NM				1.7 NM			
CATEGORY		A		B		C		D			
LNAV/ VNAV		DA		1836-1		250 (300-1)					
LPV		DA		1877-1		291 (300-1)					
LNAV MDA		2040-1		454 (500-1)		2040-1½		454 (500-1½)			
CIRCLING		2040-1		2080-1		2080-1½		2200-2			
		454 (500-1)		494 (500-1)		494 (500-1½)		614 (700-2)			



AK, 31 DEC 2020 to 25 FEB 2021

AK, 31 DEC 2020 to 25 FEB 2021