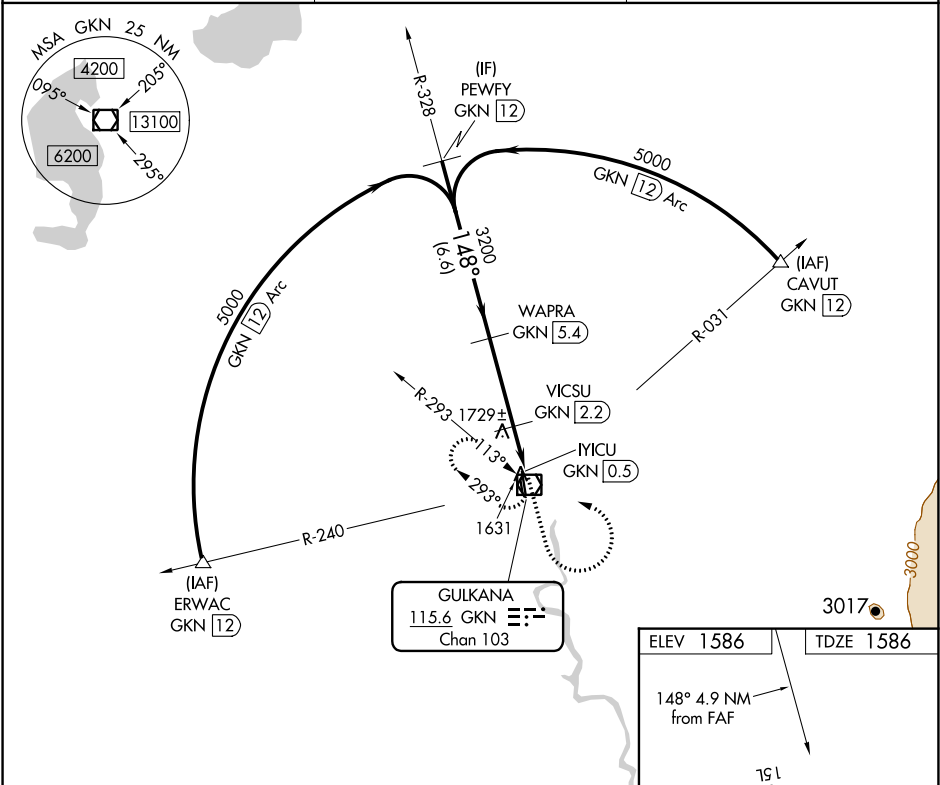


VOR/DME GKN	APP CRS	Rwy Idg	5001
115.6	148°	TDZE	1586
Chan 103		Apt Elev	1586

VOR RWY 15L
GULKANA (GKN) (PAGK)

DME required.	MISSED APPROACH: Climb to 2800 then climbing left turn to 4000 direct GKN VOR/DME and hold, continue climb-in-hold to 4000.
▼ -37°C Circling Rwy 15R, 33L NA at night. Rwy 15L helicopter visibility reduction below ¼ SM NA. When local altimeter setting not received, procedure NA.	

ASOS 134.85	ANCHORAGE CENTER 119.5 317.5	CTAF 122.9 0
----------------	---------------------------------	-----------------



	PEWFY GKN 12	WAPRA GKN 5.4	VICSU GKN 2.2	MYCU GKN 0.5
	5000	3200	2160	
	148°	3.00° TCH 49		
	6.6 NM	3.2 NM	1.7 NM	
CATEGORY	A	B	C	D
S-15L	2040-1 454 (500-1)		2040-1 3/8 454 (500-1 3/8)	
CIRCLING	2040-1 454 (500-1)	2080-1 494 (500-1)	2080-1 1/2 494 (500-1 1/2)	2200-2 614 (700-2)