

WAAS CH 77707 W26A	APP CRS 257°	Rwy ldg 5200 TDZE 154 Apt Elev 154
----------------------------------------	------------------------	---------------------------------------------------------------

RNAV (GPS) RWY 26
EDWARD G PITKA SR (GAL)(PAGA)

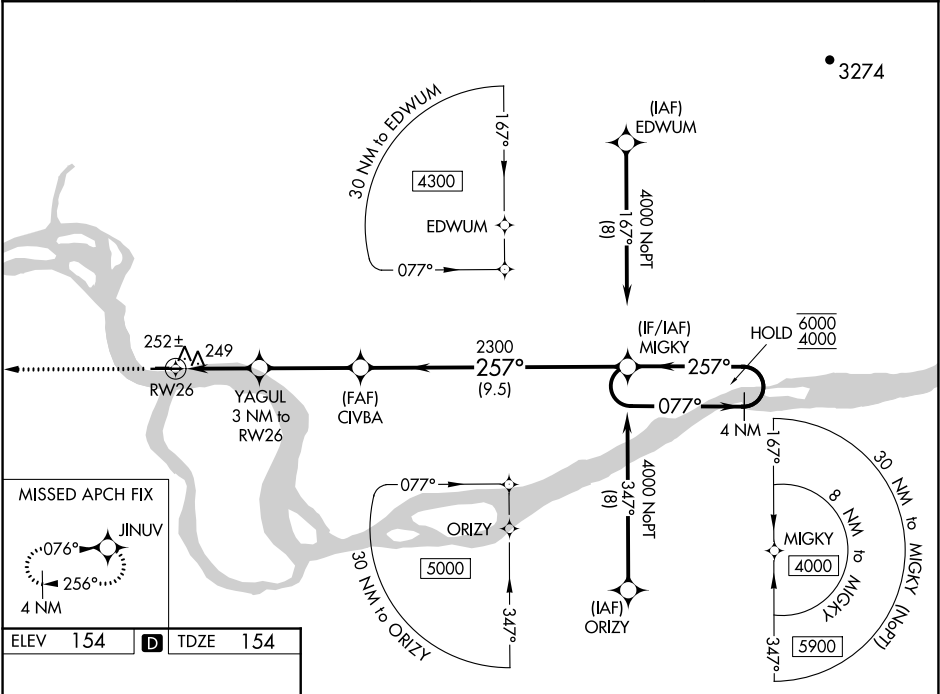
RNP APCH.

-33°C

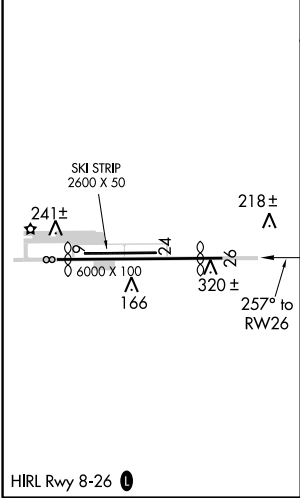
For uncompensated Baro-VNAV systems, LNAV/VNAV NA below -20°C or above 54°C.

MISSED APPROACH: Climb to 3600 direct JINUV and hold, continue climb-in-hold to 3600.

AWOS-3P 132.525	ANCHORAGE CENTER 127.0 290.2	FAIRBANKS RADIO 122.2	CTAF 123.0
---------------------------	----------------------------------------	---------------------------------	----------------------



ELEV 154	D	TDZE 154
----------	----------	----------



3600 JINUV				
* LNAV only				
* 1 NM to RW26				
RW26				
1 NM				
2 NM				
3.6 NM				
9.5 NM				
MIGKY				
4 NM Holding Pattern				
077° → 6000				
← 257° 4000				
GP 3.00°				
TCH 42				
CATEGORY	A	B	C	D
LPV DA	404-1 250 (300-1)			
LNAV/VNAV DA	414-1 260 (300-1)			
LNAV MDA	520-1 366 (400-1)			
C CIRCLING	560-1 406 (500-1)	620-1 466 (500-1)	620-1½ 466 (500-1½)	720-2 566 (600-2)