

LOC/DME I-OME 108.7 Chan 24	APP CRS 279°	Rwy Idg 6009 TDZE 25 Apt Elev 41	ILS Y or LOC Y RWY 28 NOME (OME)(PAOM)
---	------------------------	---	---

RNAV 1-GPS required. DME required.

▼

▲

☼

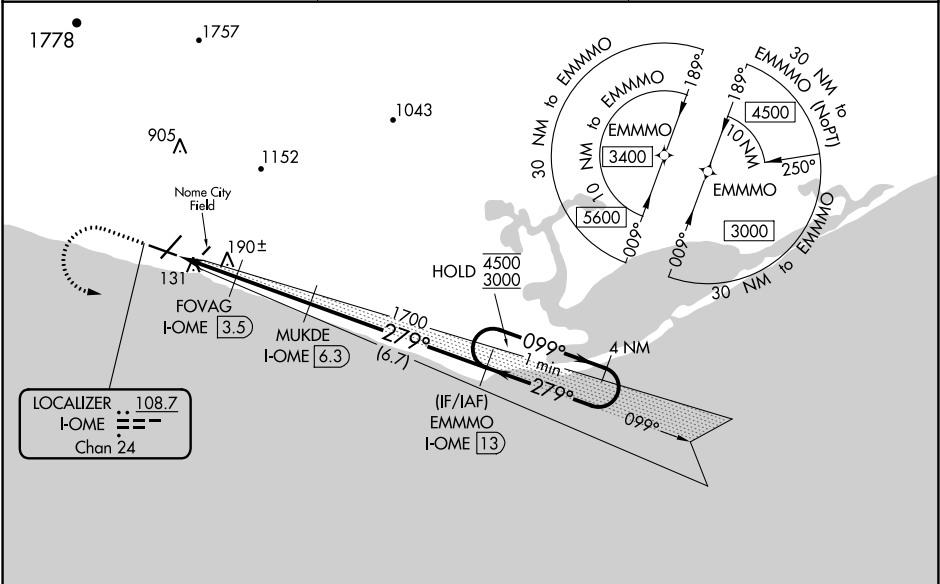
-34°C

Circling Rwy 21 NA at night. Rwy 28 helicopter visibility reduction below RVR 4000 NA. For inop ALS, increase S-LOC 28 Cats A/B visibility to RVR 5500 and Cats C/D visibility to RVR 6000. Inop table does not apply to S-ILS Rwy 28. Circling NA for Cats C and D north of Rwy 10-28.

MALSR

MISSED APPROACH: Climb to 1300 then climbing left turn to 3000 direct EMMMO and hold.

AFIS 119.925	ANCHORAGE CENTER 133.3 290.4	NOME RADIO 123.6 (CTAF) 1
------------------------	--	-------------------------------------



ELEV 41

D

TDZE 25

1300

3000

EMMMO I-OME 13

Use I-OME DME when on localizer course.

EMMMO I-OME 13

One Minute or 4 NM Holding Pattern

*LOC only.

FOVAG I-OME 3.5

MUKDE I-OME 6.3

099°→ 4500

←279° 3000

GS 3.00°

TCH 51

REIL Rwy 3 and 10 1

HIRL Rwy 10-28 1

MIRL Rwy 3-21 1

279° 5.1 NM from FAF

CATEGORY	A	B	C	D
S-ILS 28	275/40	250 (300-¾)		
S-LOC 28	440/40	415 (400-¾)		
CIRCLING	540-1	499 (500-1)	540-1½ 499 (500-1½)	700-2 659 (700-2)