
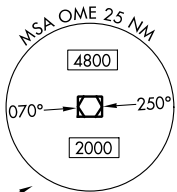
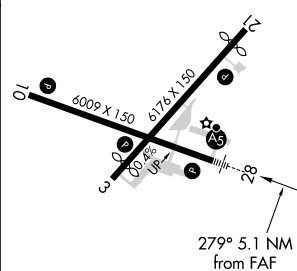


ILS Z or LOC Z RWY 28
NOME(OME)(PAOM)

MALS R  **MISSED APPROACH:** Climb to 1100 then climbing left turn to 3000 direct OME VOR/DME and hold, continue climb-in-hold to 3000.

NOME RADIO
123.6 (CTAF) **L**

[illegible]

REIL Rwy 3 and 10 **L**
HIRL Rwy 10-28 **L**
MIRL Rwy 3-21 **L**

AK, 31 DEC 2020 to 25 FEB 2021