

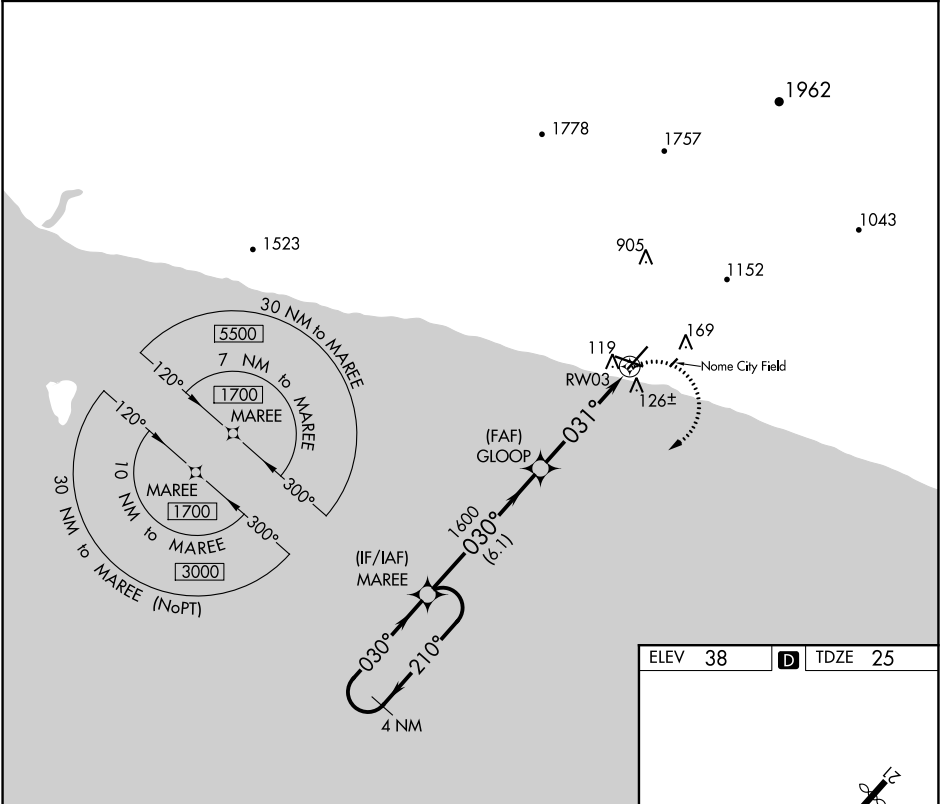
APP CRS <b>031°</b>	Rwy Idg TDZE <b>25</b> Apt Elev <b>38</b>
------------------------	---

RNAV (GPS) RWY 3

NOME (OME)(PAOM)

<div><div><div></div><div></div></div><div><div></div><div></div></div></div> <div><div>DME/DME RNP-0.3 NA. Helicopter visibility reduction below 1 SM NA. Night landing: Rwy 21 NA. Circling NA for Cats C and D north of Rwy 10-28.</div></div>	MISSED APPROACH: Climbing right turn to 1700 direct MAREE and hold.
---	---

AFIS <b>119.925</b>	ANCHORAGE CENTER <b>133.3 290.4</b>	NOME RADIO <b>123.6</b> (CTAF) <b>Q</b>
------------------------	--	--



VGSI and descent angles not coincident (VGSI Angle 3.00/TCH 29).				
4 NM Holding Pattern				
1700 ← 210° / 030° →				
MAREE				
GLOOP				
1600				
3.00° TCH 45				
RWY 03				
6.1 NM				
4.8 NM				
CATEGORY	A	B	C	D
LNAV MDA	440-1	415 (500-1)	440-1¼	415 (500-1¼)
CIRCLING	540-1	502 (600-1)	540-1½	700-2
			502 (600-1½)	662 (700-2)

ELEV 38	D	TDZE 25
<div>REIL Rwy 3 and 10 <b>Q</b></div> <div>HIRL Rwy 10-28 <b>Q</b></div> <div>MIRL Rwy 3-21 <b>Q</b></div>		

AK, 31 DEC 2020 to 25 FEB 2021

AK, 31 DEC 2020 to 25 FEB 2021