

ATIS 124.4
CINC DEL 127.6
GND CON 121.9
FAIRBANKS TOWER
118.3 257.8
FAIRBANKS DEP CON
125.35 363.2

NOTE: Chart not to scale.

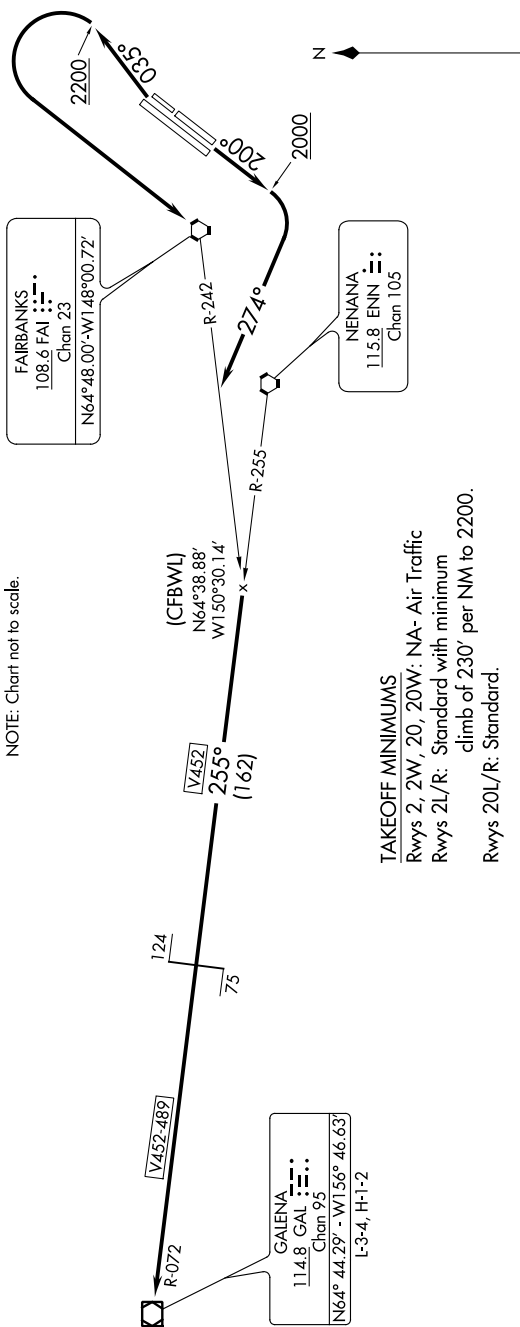
DEPARTURE ROUTE DESCRIPTION

TAKEOFF RUNWAYS 2L/R: Climb heading 035° to 2200,
then left turn direct FAI VORTAC, thence ...
TAKEOFF RUNWAYS 20L/R: Climb heading 200° to 2000,
then right turn heading 274°, thence ...

... intercept FAI R-242 to ENN R-255, then on ENN R-255 and GAL R-072 to GAL VOR/DME, then continue climb on assigned route and altitude.

TAKEOFF MINIMUMS

NOTE: DME Required



GALENA SIX DEPARTURE

(GLEEN6.GLEEN) 15AUG19

FAIRBANKS, ALASKA

FAIRBANKS INTL (FAI) (PAFA)