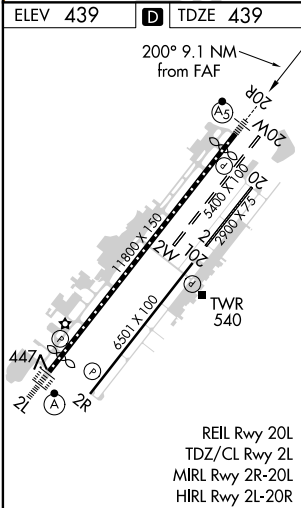
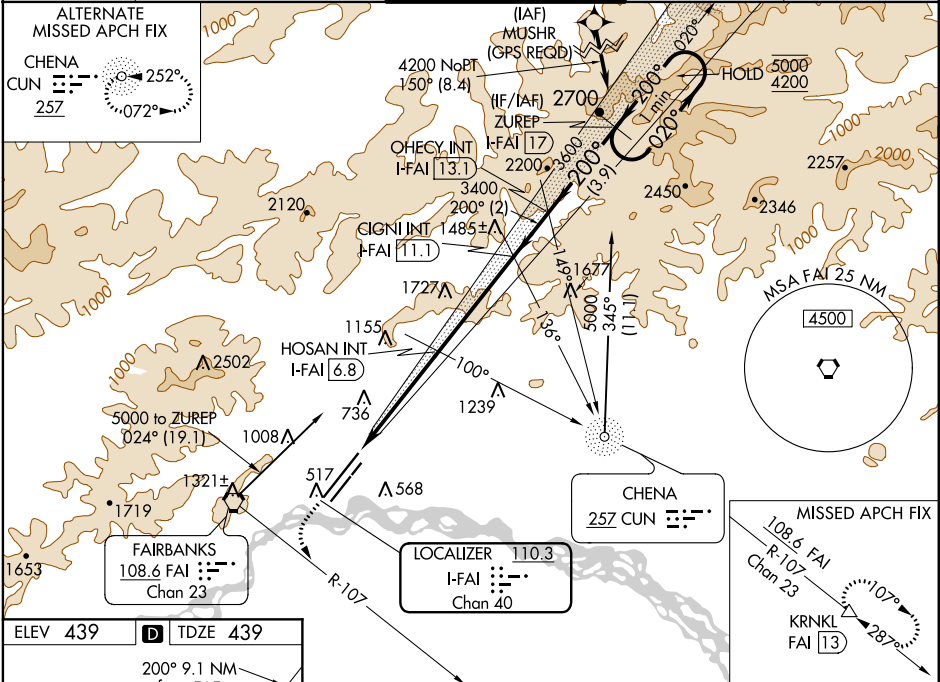


LOC/DME I-FAI	APP CRS	Rwy Idg	11050
110.3	200°	TDZE	439
Chan 40		Apt Elev	439

ILS or LOC RWY 20R  
FAIRBANKS INTL (FAI) (PAFA)

DME Required. DME required for procedure entry.	MALSR	MISSED APPROACH: Climb to 1100 then climbing left turn to 3000 on FAI VORTAC R-107 to KRNLK/FAI VORTAC 13 DME and hold.
<p>⚠ Circling NA west of Rwy 2L-20R. Circling NA to Rwy 2W and 20W. For inop ALS increase S-ILS 20R Cat E visibility to RVR 4000, increase S-LOC 20R Cat E visibility to 1 3/8 SM. #RVR 1800 authorized with use of FD or AP or HUD to DA.</p>	<p>AS</p>	

ATIS	FAIRBANKS APP CON	FAIRBANKS TOWER	GND CON	CLNC DEL
124.4	125.35 363.2	118.3 257.8	121.9	127.6



1100	3000	KRNLK	VGSI and ILS glidepath not coincident (VGSI Angle 3.00/TCH 74).	ZUREP	One Minute Holding Pattern
FAI R-107					
Use I-FAI DME when on the localizer course. *LOC only					
*I-FAI [3.2]	HOSAN INT I-FAI [6.8]	CIGNI INT I-FAI [11.1]	OHECY INT I-FAI [17]		
2020*	3400	3400	3600	5000	4200
1.2	3.6 NM	4.3 NM	2 NM	3.9 NM	
CATEGORY	A	B	C	D	E
S-ILS 20R#	639/24 200 (200-1/2)				
S-LOC 20R	880/24	441 (500-1/2)	880/45	441 (500-7/8)	
CIRCLING	880-1	900-1	900-1 1/2	1020-2	1060-2 1/4
	441 (500-1)	461 (500-1)	461 (500-1 1/2)	581 (600-2)	621 (700-2 1/4)